



2021

Adopt-a-Median Program



3/25/2021

Table of Contents

Introduction.....2

Instructions.....2

Planting in Medians Ordinance.....3

City Approved Design Templates and Plant Palette.....6

Median Design “Themes”29

Median Design “Intensities”30

Recognition Signage.....31

Adopt-a-Median Application.....32

Introduction

The City of Cape Coral provides the opportunity to participate in the beautification of roadway medians through the Adopt-a-Median Program. This program allows residents, businesses, and organizations to fund the “adoption” of a median and install landscaping in accordance with the approved design elements within this document, with the City providing perpetual maintenance of the landscaping. The City also provides signage to show appreciation to participants in the program, allowing the public to recognize the generous donation. The City of Cape Coral may even contribute toward projects of high value if considered and approved by City Council.

Instructions

To participate in the Adopt-a-Median program please thoroughly review this informational packet to fully understand the City ordinances and median landscaping design elements. The landscape design shall be in accordance with the approved design templates, plant palette, roadway theme and intensity level. Please schedule a meeting with the Public Works Department prior to completing the application. Public Works staff will work with the applicant to ensure the appropriate design elements are incorporated and provide direction to the applicant for their proposed landscape plan. Once the plan is completed in accordance with the design elements, the applicant should complete the application and submit for review and approval.

Any questions should be directed to Persides Zambrano at 239-574-0733 or pzambran@capecoral.gov.

Planting in Medians Ordinance

Section 5.5.17. - Planting in medians and cul-de-sacs.

- A. Permits.
 - 1. Required. It shall be unlawful for any person to place any landscape material, including plant materials and hardscape materials other than mulch, in any median or cul-de-sac under the control of the city, without first obtaining a permit for such work from the City.
 - 2. Application. An application for a permit shall be submitted on a form provided by the city and include all required information as specified in the permit application forms, including, but not limited to:
 - a. A general vicinity map showing the nearest intersecting streets;
 - b. The location of existing public and private utilities, including overhead power lines and drainage facilities within twenty (20) feet of the proposed landscaping;
 - c. A planting plan showing all pertinent dimensions, the location of existing plant materials with indication if they are to be removed, the location of proposed plant materials indicating the size and species, the location of existing or proposed hardscape materials, and the proposed irrigation plan and source of water;
 - d. Any additional information reasonably required by the City because of unique circumstances of the project; and
 - e. A non-refundable application fee as established by Resolution of the City Council.
- B. Median or cul-de-sac design. Landscaping in medians or cul-de-sacs shall be in accordance with the City of Cape Coral Engineering Design Standards and the City-approved median landscape templates. The median landscape templates shall be approved by Resolution of the City Council.
- C. Prohibited vegetation. The prohibited vegetation standards of Section 5.5.9 of this article shall apply in medians and cul-de-sacs.
- D. Review criteria. In determining whether a permit will be issued, the city shall consider factors that include, but are not limited to, the following:
 - 1. Relationship to traffic and pedestrian safety in accordance with the City of Cape Coral Engineering Design Standards;
 - 2. Location of existing and proposed public utilities, power lines, and other right-of-way improvements;
 - 3. Effect on surface waters and drainage patterns;
 - 4. Aesthetic effect of the proposed landscaping, including whether the resultant theme and intensity would be consistent throughout the specific median or cul-de-sac in accordance with the median landscape templates, and whether the proposed landscaping would coordinate with the landscape theme and intensity established in the vicinity;
 - 5. Type, size, and location of any extant plant materials and hardscape materials, if any;
 - 6. Type, size, and location of proposed plant materials and hardscape materials on the median or cul-de-sac, in accordance with the median landscape templates;

7. Method of removal of existing plant materials and hardscape materials;
8. Adequacy of proposed irrigation, its expense to the city, and availability of water supply;
9. The city's ability to maintain the landscaping including economic ability, manpower, and location of the median or cul-de-sac; and
10. Potential sight obstructions and compliance with all standards and regulations regarding sight distances and clear zones.

E. Approval.

1. In its approval of any permit request, the city may request modifications, which may include:
 - a. The planting plan, in accordance with the City of Cape Coral Engineering Design Standards and median landscape templates, including a requirement that the entire median or cul-de-sac be included in the design, as well as to plant sizes, species, location, and nature placement of hardscape materials;
 - b. Plant installation or removal methods or specifications;
 - c. Regulation of the commencement and completion date, work hours, or phasing of installation or removal;
 - d. Requirement of a financial instrument to ensure removal of the landscaping;
 - e. Requirement that all or part of the landscaping be installed by a licensed landscape contractor or certified arborist;
 - f. Requirement that temporary traffic control measures be implemented by a barricade company with certification by the American Traffic Safety Services Association (ATSSA) or the International Municipal Signal Association (IMSA);
 - g. Requirement that curbing be installed;
 - h. Requirement that erosion control measures be implemented; and
 - i. Submission of a hold harmless agreement acceptable to the city.
2. The permittee shall be responsible for compliance with the permit.
3. Approval of a permit to install landscape materials shall not obviate the requirement to obtain all other necessary permits, including permits for irrigation and signs.

F. Changes subsequent to approval. After a planting plan has been approved, it shall be unlawful to change, modify, alter, or otherwise deviate from the terms of the planting plan without first obtaining written approval of an amendment to the planting plan. Modifications that require approval of an amended landscape plan include the following:

1. Replacement of any plant indicated on an approved planting plan with a plant of a different species in accordance with the City of Cape Coral Engineering Design Standards and median landscape templates; or
2. Modification of the location of any plants or other landscape materials.

The city may impose a reasonable fee for the review and approval of an application for an amendment to a planting plan. Such fee, if any, shall be established by Resolution of the City Council. An application for an amendment shall be reviewed in accordance with the standards herein. The replacement of plants indicated on an approved landscape plan with plants of the same species shall not require the submission of an amended landscape plan.

- G. Permit expiration. A permit for installing landscape materials in any median or cul-de-sac under the control of the city shall be valid for a one-year period from the date of issuance, except as otherwise provided within the permit approval.
- H. Maintenance. Once any landscape materials are installed in a median or cul-de-sac in accordance with the planting plan approved by the City, the materials shall be the property of the city. The City shall be responsible for maintaining any and all landscaping permitted by this subsection in accordance with Section 5.5.16 of this article. Should any plant material or other landscape material or portion thereof become a safety hazard, unsightly, or die or become diseased, or if it is installed or maintained in a manner inconsistent with the permitting requirements herein, the city shall have the option of replacing or removing it. The City will determine compliance with this subsection.
- I. Removal. Any landscape materials planted or installed without the express written permission of the city shall be subject to removal by the city in its sole discretion. Except for the City and persons with a permit or other written authorization from the City, no person shall remove landscape materials from a median or cul-de-sac.
 - 1. The authorization in this section for the removal of landscaping in medians and cul-de-sacs shall be construed as supplementary to any other means of enforcement available to the city and shall not be construed so as to negate the authority of the Code Compliance Special Magistrate to hear and adjudicate appropriate cases.
 - 2. The city may also, in its sole discretion, remove any landscape materials placed in any median or cul-de-sac under the city's control, for utility maintenance, safety, or any other reason. The City is not required to replace any landscaping removed pursuant to this section.
- J. Revocation. If any requirements of the approval are not satisfied, the city may revoke or stop work on any permit issued pursuant to this subsection.
- K. City improvements. The City may install infrastructure improvements and recognition signage in medians or cul-de-sacs improved pursuant to this section. The City has the sole discretion of the placement, location, and size of any recognition signage installed pursuant to this section. In making such determination the City's decision shall be based on, but not be limited to, the classification of the road; width of the roadway, median, or cul-de-sac; proximity to intersections; and curves/bends in the roadway.

(Ord. 33-20, § 1, 7-20-2020)

Cape Coral

Median Landscape Templates



06.17.19 / C10212

Table 212.11.3 Minimum Tree Spacing

Design Speed (mph)	Minimum Tree Spacing (Center-to-Center of Trunk) (feet)	
	4" < Tree Diameter ≤ 11"	11" < Tree Diameter ≤ 18"
25-30	25	90
35	30	105
40	35	120
45	40	135
50	50	150
55	55	165
60	60	180

Notes:

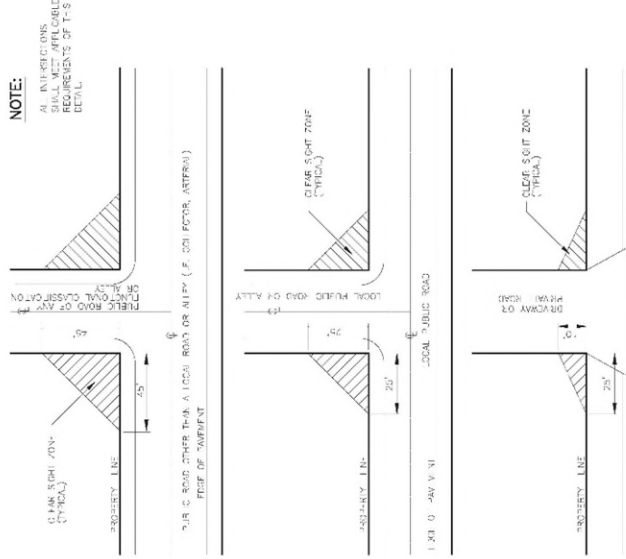
- (1) Size and spacing are based on the following conditions:
 - (a) A single line of trees in the median parallel to but not necessarily collinear with the centerline.
 - (b) A straight approaching mainline and intersection angle between 60° and 120°.
 - (c) Space trees with 4" < Dia. ≤ 11" intermixed with trees with 11" < Dia. ≤ 18" based on trees with 11" < Dia. ≤ 18".
- (2) Detail tree size, spacing, and location in the plans for any other conditions.

Applies to within limits of the clear-sight triangles.
 Refer to the City of Cape Coral Engineering Design Standards (Latest Edition)
 Sheet No. G-22 Site Triangles for Unobstructed View at Intersections and Driveways.

INTERSECTION SIGHT DISTANCE

STREET WIDTH OF LOCAL ROAD (FT.)	STREET WIDTH OF MAIN ROAD (FT.)	INTERSECTION SIGHT DISTANCE (FT.)	TRUCK BEARING AND ORIP-A	OTHER SIGHT SIGN
40	50	145	145	145
50	60	175	175	175
60	70	205	205	205
70	80	235	235	235
80	90	265	265	265
90	100	295	295	295
100	110	325	325	325
110	120	355	355	355
120	130	385	385	385
130	140	415	415	415
140	150	445	445	445
150	160	475	475	475
160	170	505	505	505
170	180	535	535	535
180	190	565	565	565
190	200	595	595	595
200	210	625	625	625
210	220	655	655	655
220	230	685	685	685
230	240	715	715	715
240	250	745	745	745
250	260	775	775	775
260	270	805	805	805
270	280	835	835	835
280	290	865	865	865
290	300	895	895	895
300	310	925	925	925
310	320	955	955	955
320	330	985	985	985
330	340	1015	1015	1015
340	350	1045	1045	1045
350	360	1075	1075	1075
360	370	1105	1105	1105
370	380	1135	1135	1135
380	390	1165	1165	1165
390	400	1195	1195	1195
400	410	1225	1225	1225
410	420	1255	1255	1255
420	430	1285	1285	1285
430	440	1315	1315	1315
440	450	1345	1345	1345
450	460	1375	1375	1375
460	470	1405	1405	1405
470	480	1435	1435	1435
480	490	1465	1465	1465
490	500	1495	1495	1495
500	510	1525	1525	1525
510	520	1555	1555	1555
520	530	1585	1585	1585
530	540	1615	1615	1615
540	550	1645	1645	1645
550	560	1675	1675	1675
560	570	1705	1705	1705
570	580	1735	1735	1735
580	590	1765	1765	1765
590	600	1795	1795	1795
600	610	1825	1825	1825
610	620	1855	1855	1855
620	630	1885	1885	1885
630	640	1915	1915	1915
640	650	1945	1945	1945
650	660	1975	1975	1975
660	670	2005	2005	2005
670	680	2035	2035	2035
680	690	2065	2065	2065
690	700	2095	2095	2095
700	710	2125	2125	2125
710	720	2155	2155	2155
720	730	2185	2185	2185
730	740	2215	2215	2215
740	750	2245	2245	2245
750	760	2275	2275	2275
760	770	2305	2305	2305
770	780	2335	2335	2335
780	790	2365	2365	2365
790	800	2395	2395	2395
800	810	2425	2425	2425
810	820	2455	2455	2455
820	830	2485	2485	2485
830	840	2515	2515	2515
840	850	2545	2545	2545
850	860	2575	2575	2575
860	870	2605	2605	2605
870	880	2635	2635	2635
880	890	2665	2665	2665
890	900	2695	2695	2695
900	910	2725	2725	2725
910	920	2755	2755	2755
920	930	2785	2785	2785
930	940	2815	2815	2815
940	950	2845	2845	2845
950	960	2875	2875	2875
960	970	2905	2905	2905
970	980	2935	2935	2935
980	990	2965	2965	2965
990	1000	2995	2995	2995

CORNER SIGHT DISTANCE



Maximum height of ground cover in this zone is two feet (2').

Typical Median Types

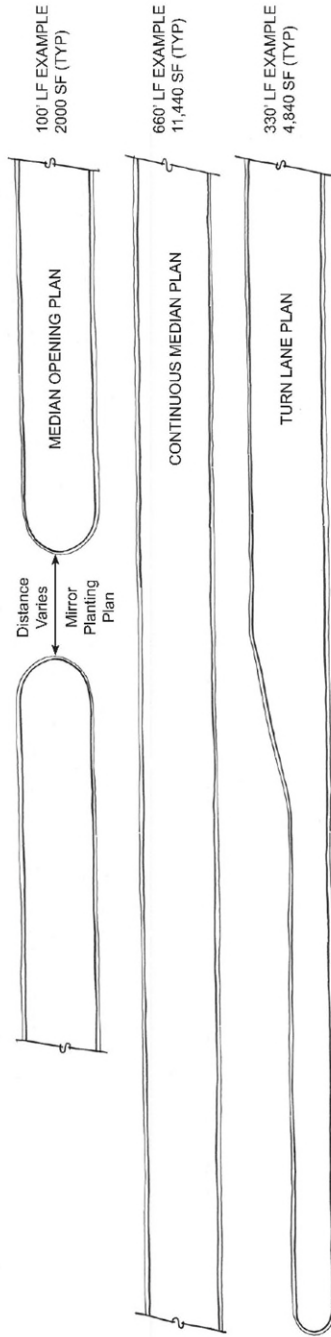
Median Landscape Templates

Cape Coral



06.17.19 / C10212
PAGE 3

TYPICAL MEDIAN TYPES



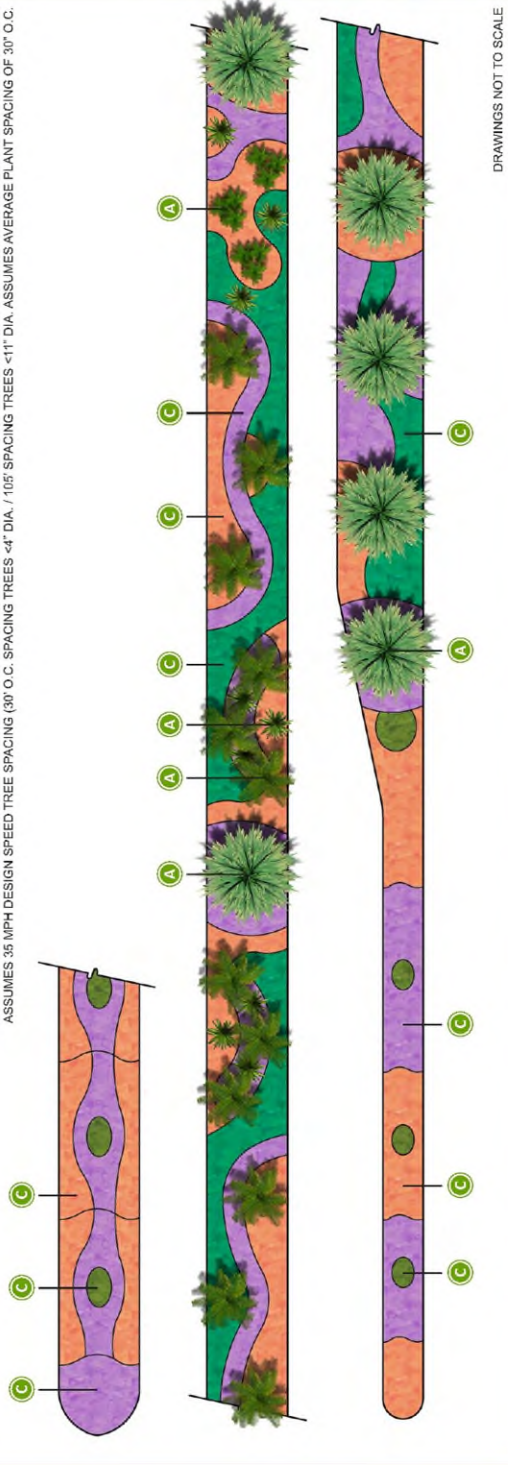
TYPICAL COVERAGE:	100 LF	330 LF	660 LF
HIGH INTENSITY = 80% COVERAGE	1,600 SF	3,872 SF	9,152 SF
MEDIUM INTENSITY = 60% COVERAGE	1,200 SF	2,904 SF	6,864 SF
LOW INTENSITY = 40% COVERAGE	800 SF	1,936 SF	4,576 SF

Tropical

High Intensity (Example)

PROPOSED LANDSCAPE PLAN

REFER TO AND APPLY INTERSECTION CLEAR SIGHT DISTANCE STANDARDS FROM CHAPTER 12 OF THE MOST CURRENT FOOT DESIGN MANUAL / CITY EXHIBIT G-22. ASSUMES 35 MPH DESIGN SPEED TREE SPACING (30' O.C. SPACING TREES <11" DIA. / 105' SPACING TREES <11" DIA. ASSUMES AVERAGE PLANT SPACING OF 30' O.C.

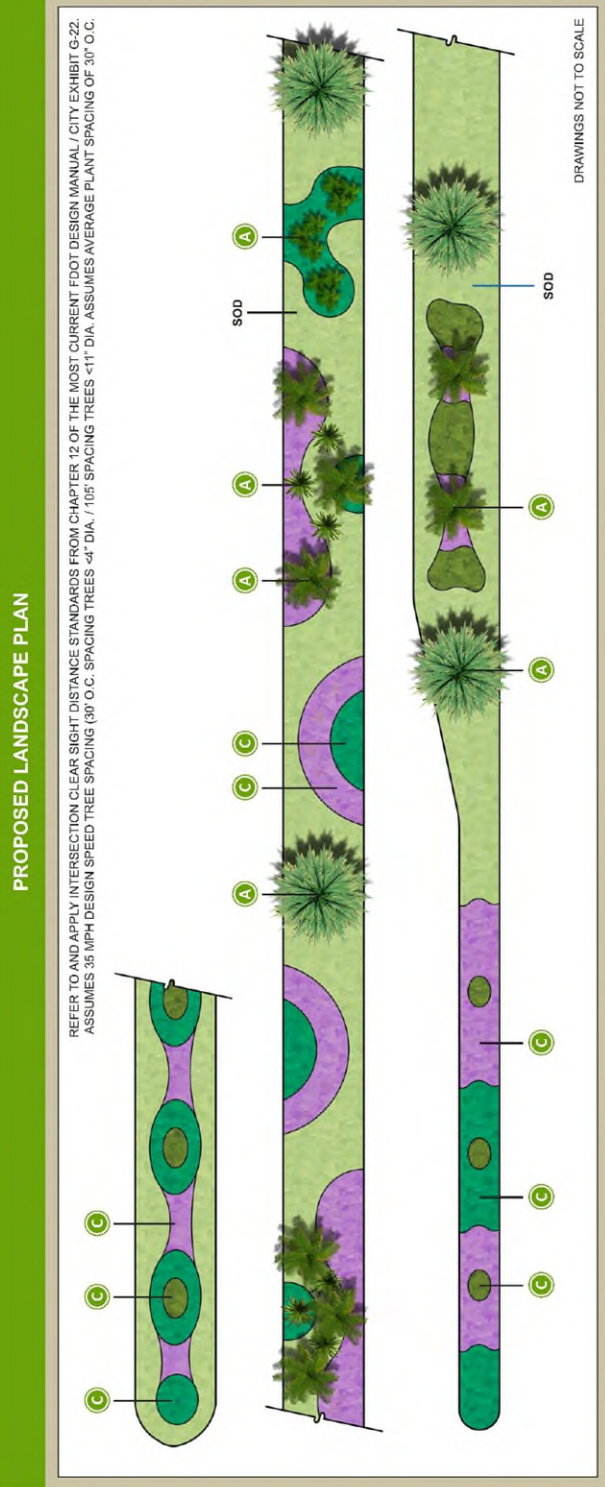


SAMPLE PLANTS: (Refer to pages 16-19 for full plant list)



Tropical

Medium Intensity (Example)



Tropical

Low Intensity (Example)

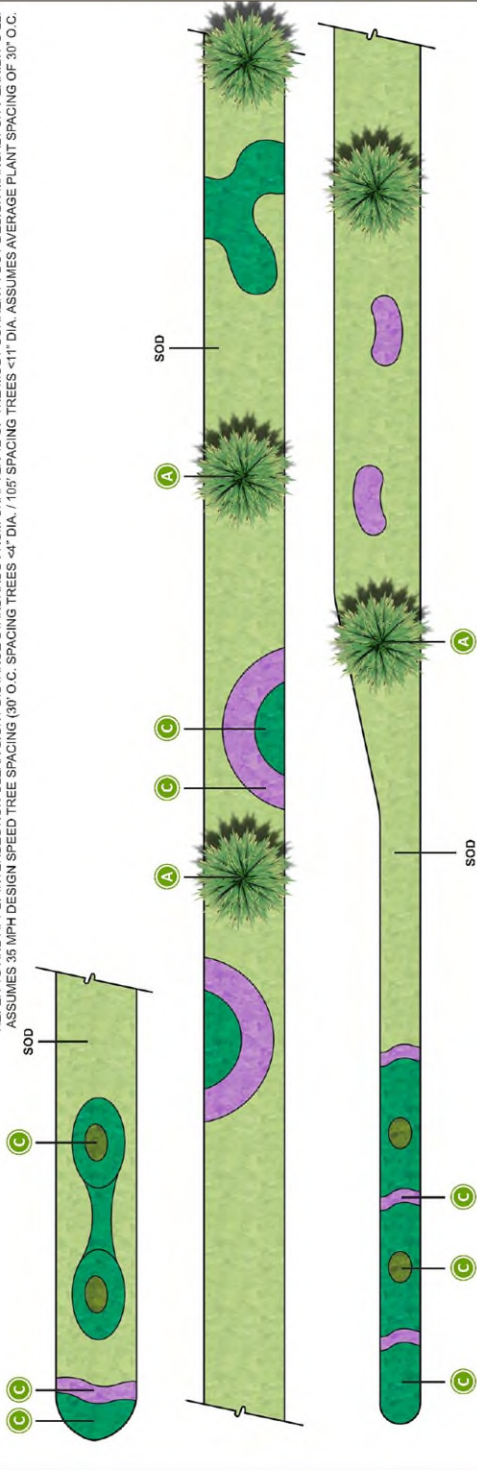
Cape Coral
Median Landscape Templates



06.17.19 / C10212
PAGE 6

PROPOSED LANDSCAPE PLAN

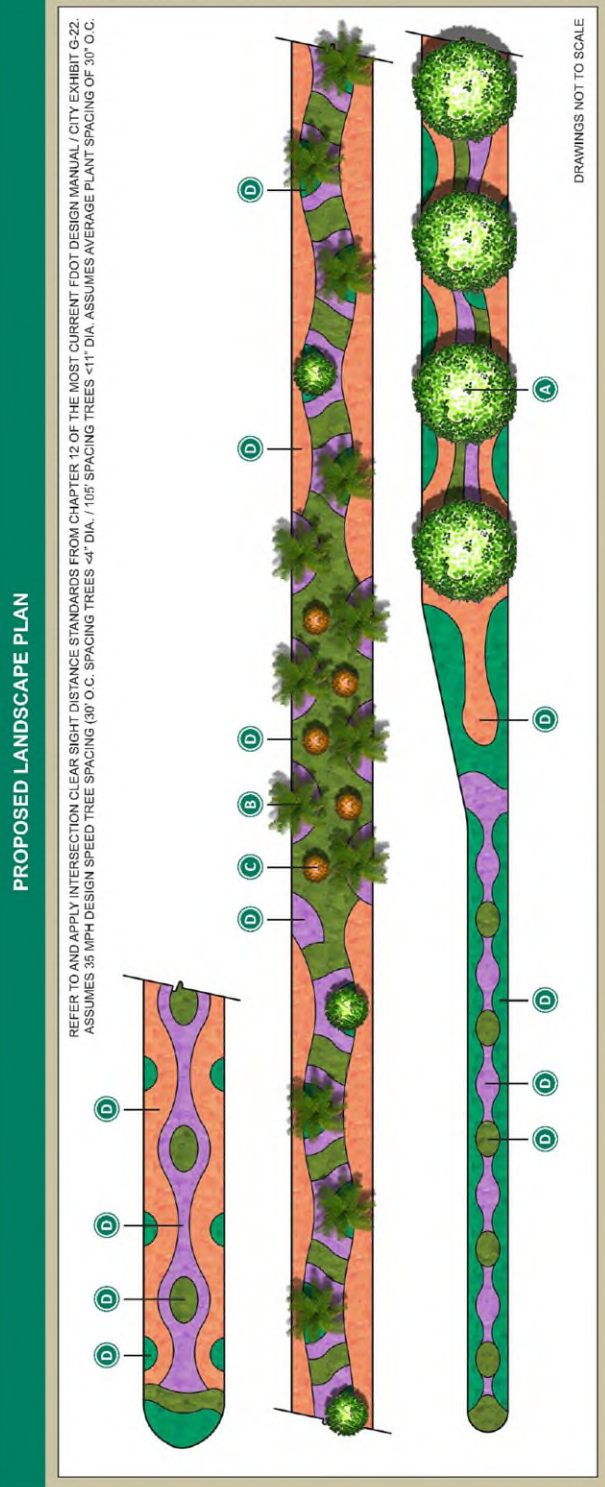
REFER TO AND APPLY INTERSECTION CLEAR SIGHT DISTANCE STANDARDS FROM CHAPTER 12 OF THE MOST CURRENT FOOT DESIGN MANUAL / CITY EXHIBIT G-22.
ASSUMES 35 MPH DESIGN SPEED TREE SPACING (30' O.C. SPACING TREES <4" DIA. / 105' SPACING TREES <11" DIA. ASSUMES AVERAGE PLANT SPACING OF 30' O.C.

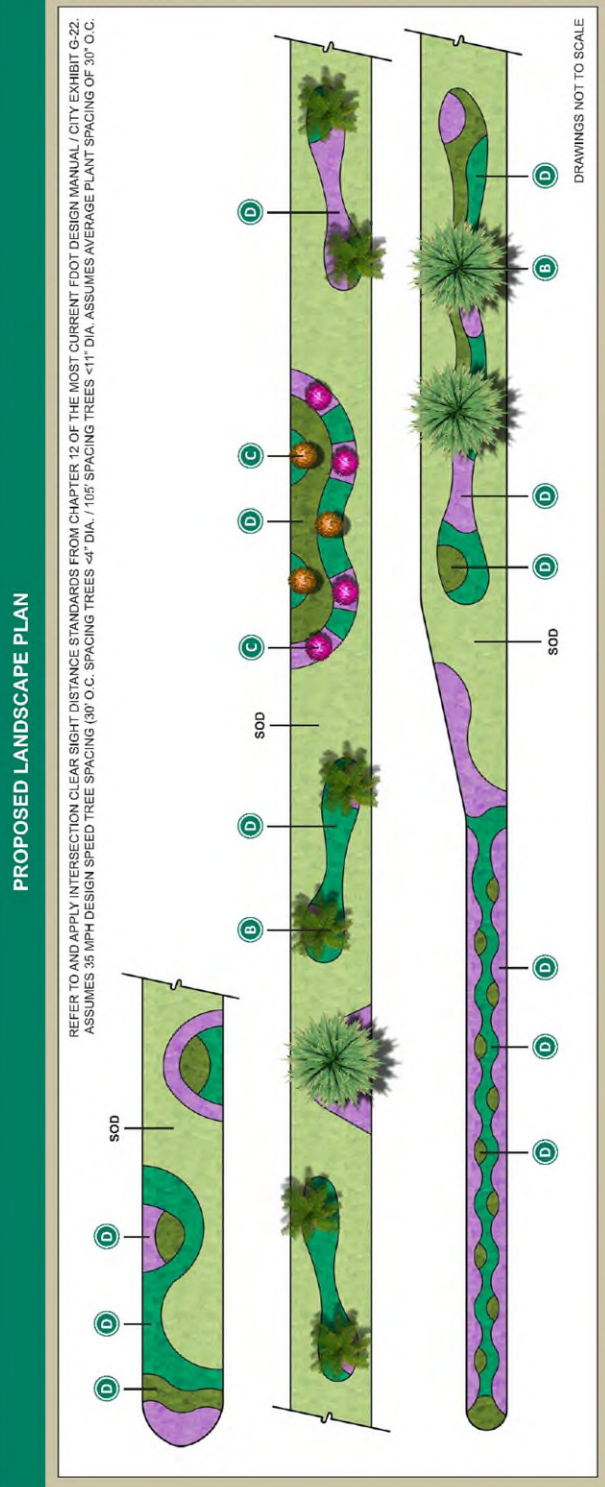


SAMPLE PLANTS: (Refer to pages 16-19 for full plant list)



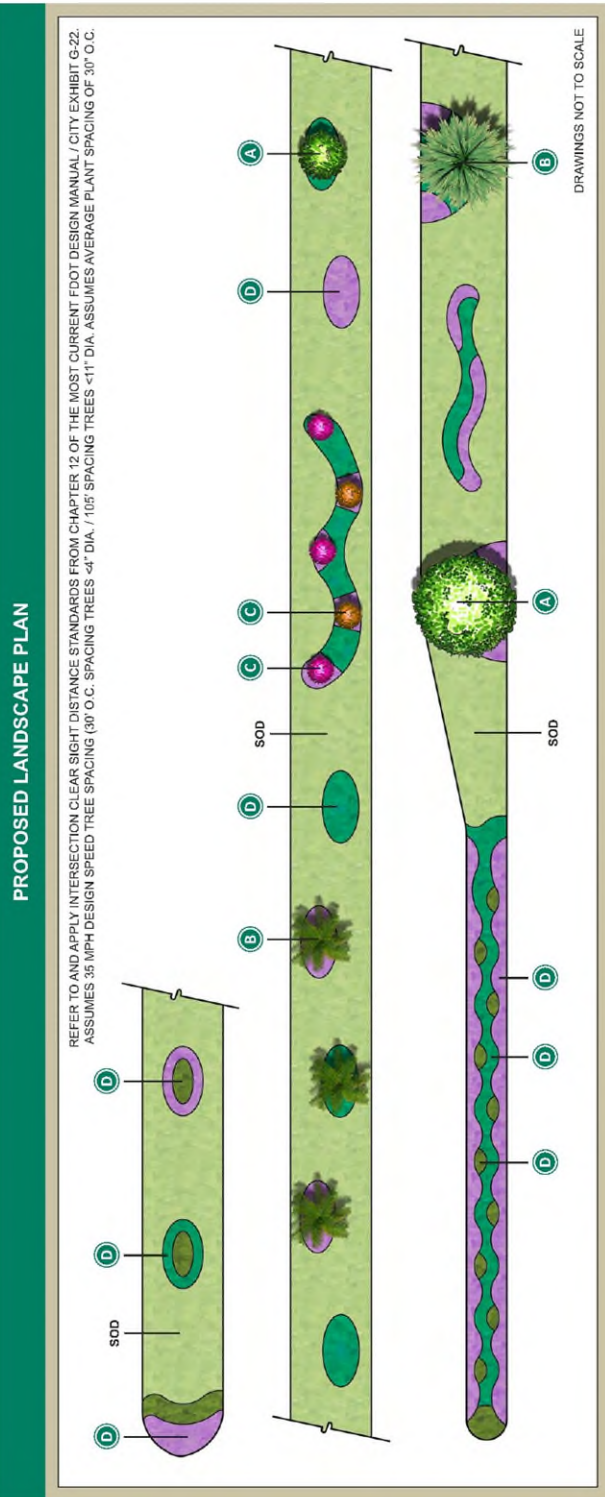
Mixed High Intensity (Example)





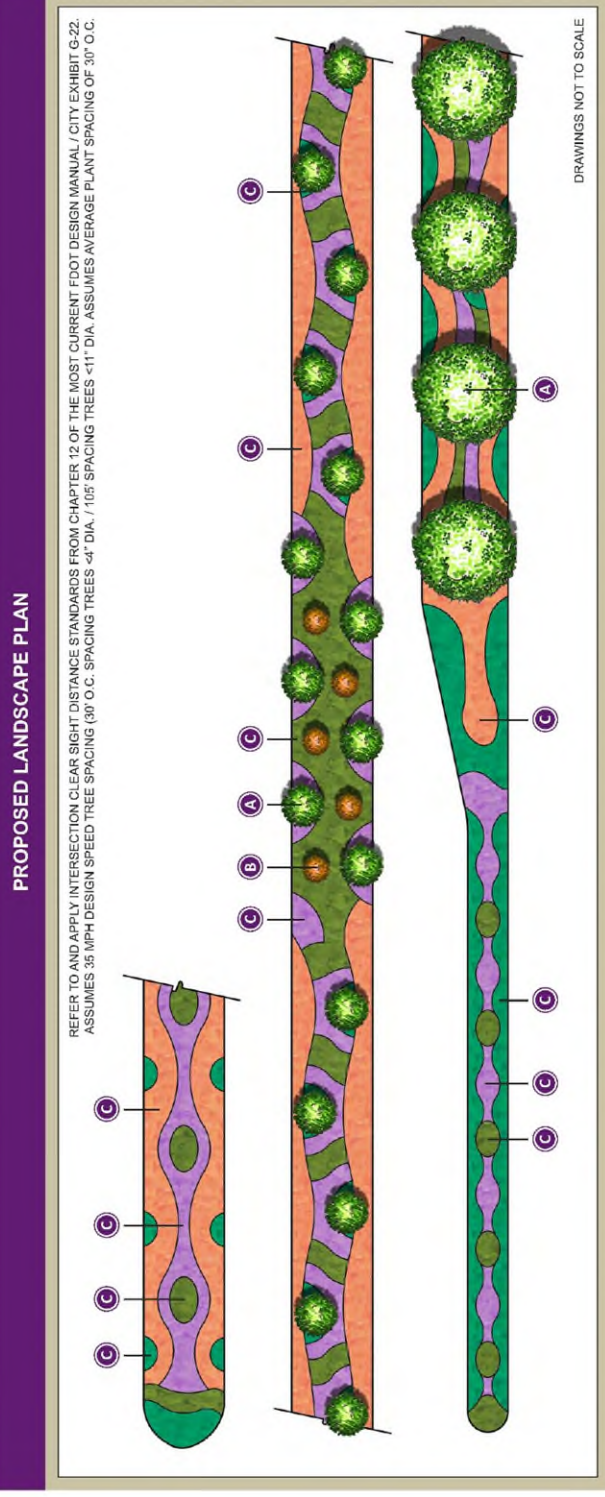
Mixed

Low Intensity (Example)



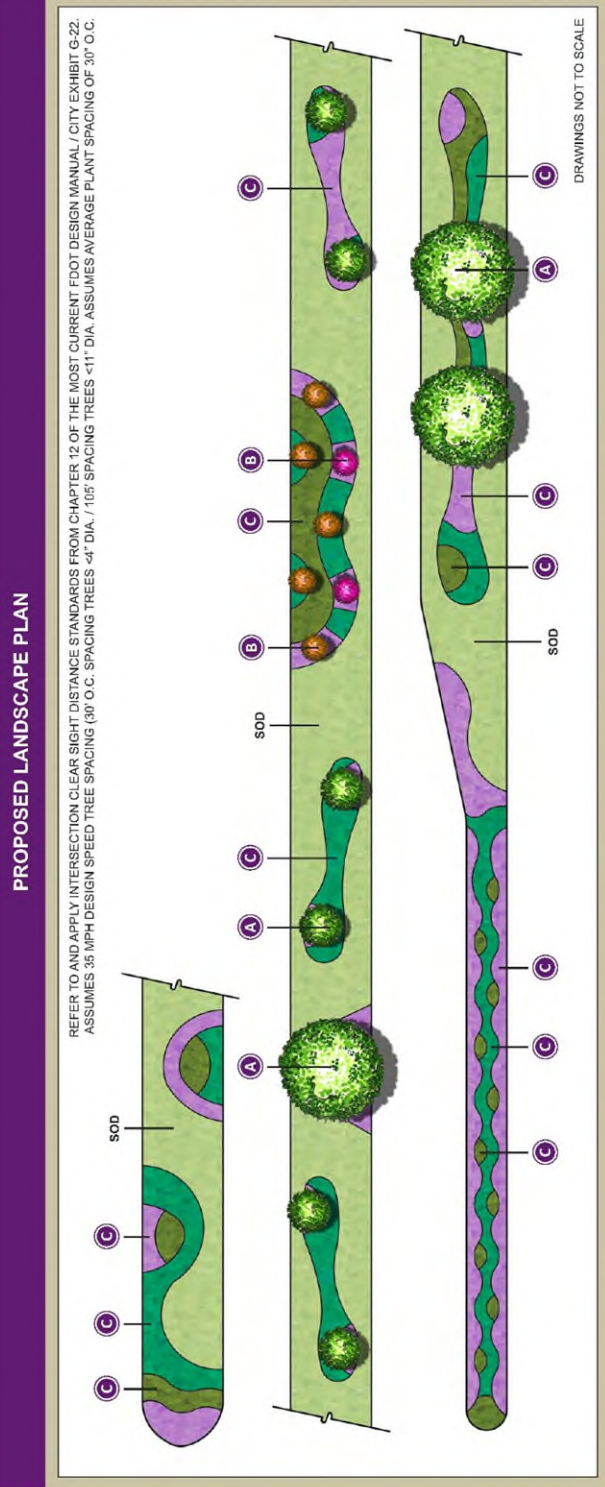
Shade

High Intensity (Example)



Shade

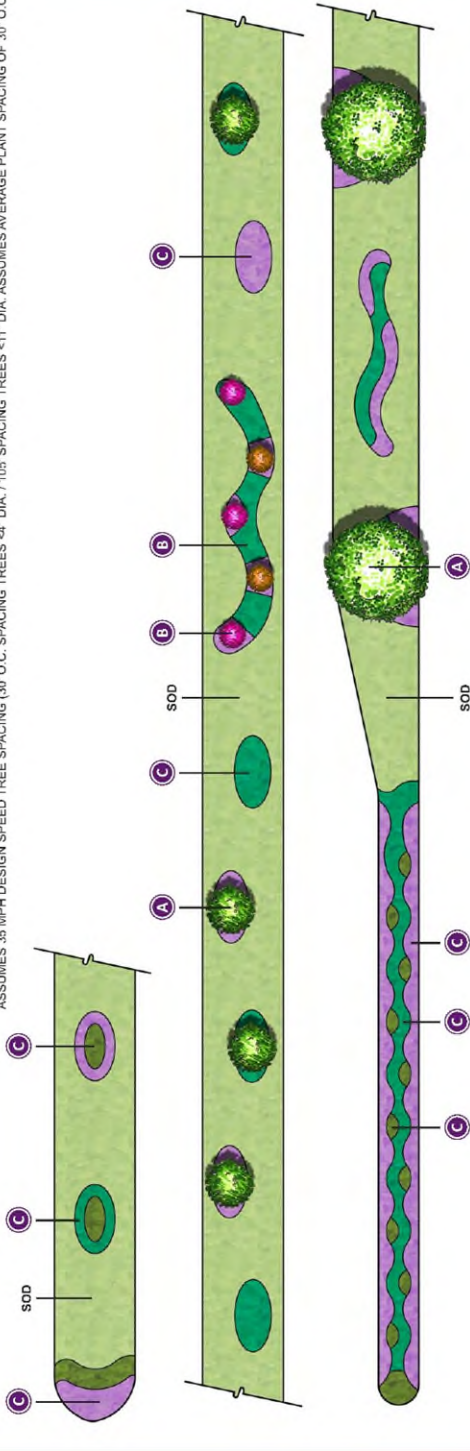
Medium Intensity (Example)



Shade

PROPOSED LANDSCAPE PLAN

REFER TO AND APPLY INTERSECTION CLEAR SIGHT DISTANCE STANDARDS FROM CHAPTER 12 OF THE MOST CURRENT FDOT DESIGN MANUAL / CITY EXHIBIT G-22. ASSUMES 35 MPH DESIGN SPEED TREE SPACING (30' O.C. SPACING TREES <4" DIA. / 105' SPACING TREES <11" DIA. ASSUMES AVERAGE PLANT SPACING OF 30' O.C.



SAMPLE PLANTS: (Refer to pages 16-19 for full plant list)



Xeriscape

High Intensity (Example)

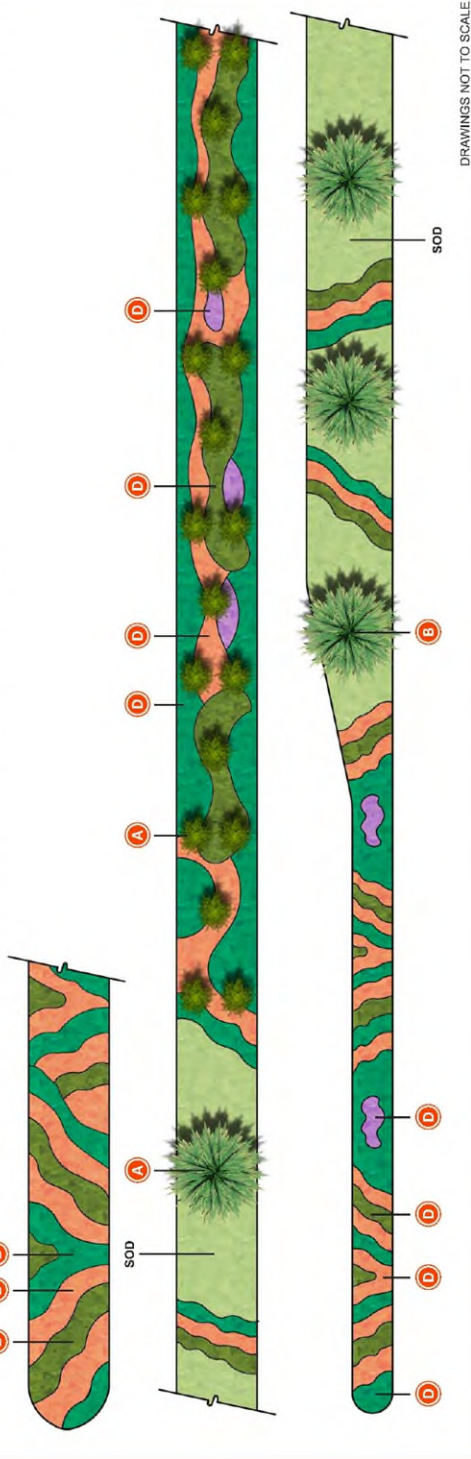
Cape Coral
Median Landscape Templates



06.17.19 / C10212
PAGE 13

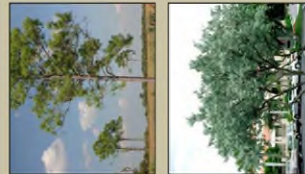
PROPOSED LANDSCAPE PLAN

REFER TO AND APPLY INTERSECTION CLEAR SIGHT DISTANCE STANDARDS FROM CHAPTER 12 OF THE MOST CURRENT FDOT DESIGN MANUAL / CITY EXHIBIT G-22. ASSUMES 35 MPH DESIGN SPEED TREE SPACING (30' O.C. SPACING TREES <4" DIA. / 105' SPACING TREES <11" DIA. ASSUMES AVERAGE PLANT SPACING OF 30' O.C.



SAMPLE PLANTS: (Refer to pages 16-19 for full plant list)

A. Trees



B. Palms



C. Shrubs



D. Accent / Ground Cover



Xeriscape

Medium Intensity (Example)

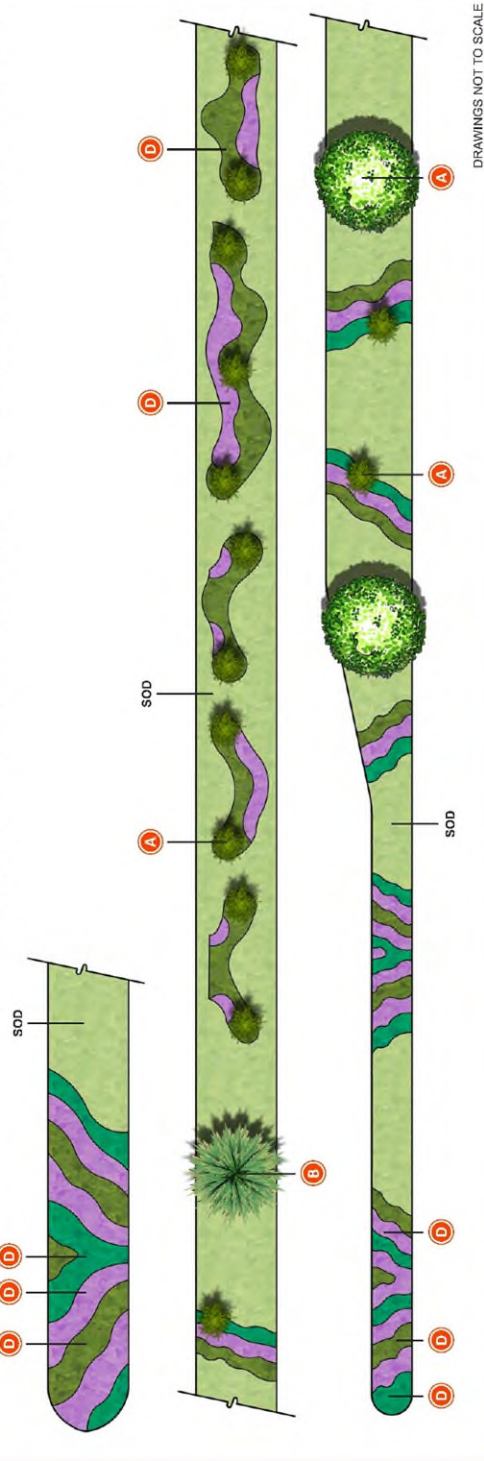
Cape Coral
Median Landscape Templates



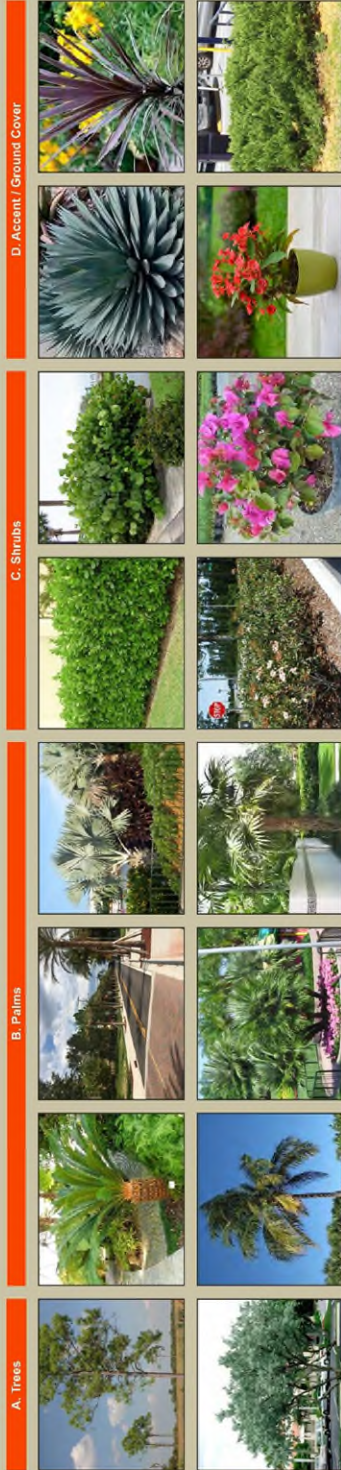
06.17.19 / C10212
PAGE 14

PROPOSED LANDSCAPE PLAN

REFER TO AND APPLY INTERSECTION CLEAR SIGHT DISTANCE STANDARDS FROM CHAPTER 12 OF THE MOST CURRENT FOOT DESIGN MANUAL / CITY EXHIBIT G-22.
ASSUMES 35 MPH DESIGN SPEED TREE SPACING (30' O.C. SPACING TREES <4" DIA. / 105' SPACING TREES <11" DIA. ASSUMES AVERAGE PLANT SPACING OF 30' O.C.



SAMPLE PLANTS: (Refer to pages 16-19 for full plant list)



Xeriscape

Low Intensity (Example)

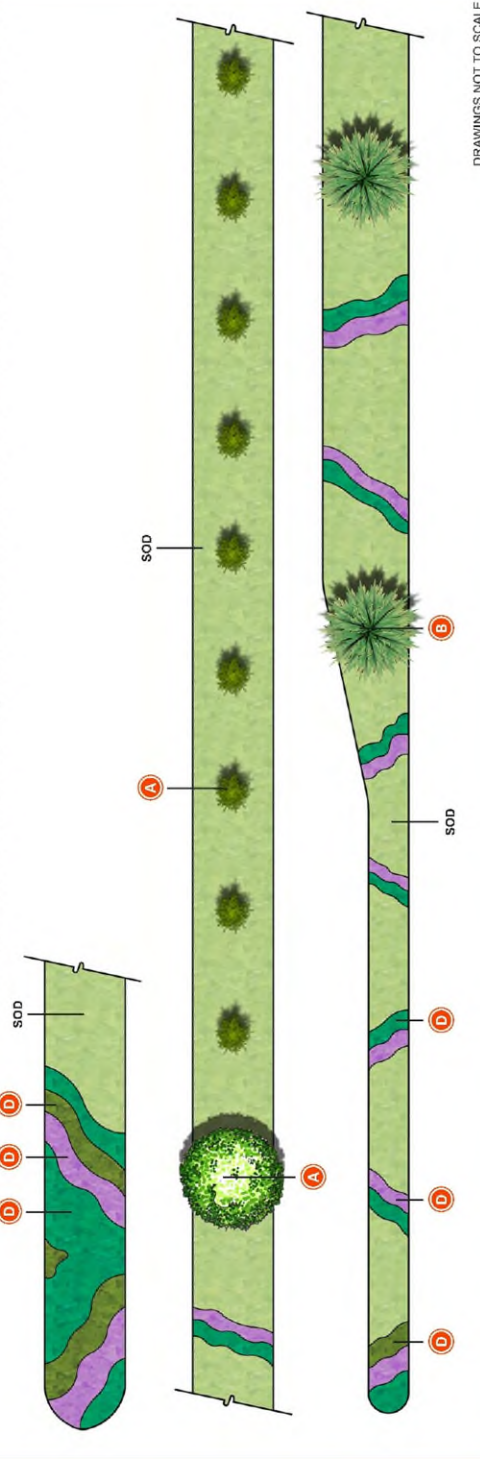
Cape Coral
Median Landscape Templates



06.17.19 / C10212
PAGE 15

PROPOSED LANDSCAPE PLAN

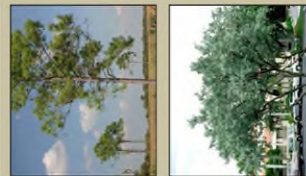
REFER TO AND APPLY INTERSECTION CLEAR SIGHT DISTANCE STANDARDS FROM CHAPTER 12 OF THE MOST CURRENT FOOT DESIGN MANUAL / CITY EXHIBIT G-22.
ASSUMES 35 MPH DESIGN SPEED TREE SPACING (30' O.C. SPACING TREES <4" DIA. / 105' SPACING TREES <11" DIA. ASSUMES AVERAGE PLANT SPACING OF 30" O.C.



DRAWINGS NOT TO SCALE

SAMPLE PLANTS: (Refer to pages 16-19 for full plant list)

A. Trees



B. Palms



C. Shrubs



D. Accent / Ground Cover





TREES

COMMON NAME	OTHER NAMES	BOTANICAL NAME	Tropical	Mix	Shade	Xeriscape	MATURE HEIGHT	MATURE SPREAD	RECOMMENDED SPACING	NOTES / COMMENTS
Black Olive Tree	Black Olive, Oliveleaf, Cuban Olive, Buddha (various)	<i>Buddleia linearis</i>					40'-60'		Equal to spread	Due to potential root damage the use of this tree is recommended to be used only in limited areas that have sufficient open areas. Should not be used immediately adjacent to walkways, medians and/or paved areas. Best for open landscaped/paved green areas.
Scotts Bush		<i>Calligonum chilense</i> or <i>viridula</i>					10'-15'		Equal to spread	
Brownwood	Green Balmwood	<i>Conocarpus erectus</i>					20'-30'		5'-6' (for shrubby) Equal to spread for tree form	
Bursera	Silver Burserawood	<i>Conocarpus erectus</i> var. <i>serotinus</i>					30'-45'		8' o.c. for shrubby Equal to spread for tree form	
Croton Myrtle		<i>Lagerströmia indica</i>					10'-20'		Equal to spread	
Cypripedium	B&K Cypress	<i>Xanthoxylum indicum</i>					100'-150'		Equal to spread	Due to incorporation of leaves and seed growth, the use of this tree is advised to be limited to areas that have sufficient open areas and should not be used in medians. Do not place immediately adjacent to walkways, medians and/or paved areas. Best for open landscaped/paved green areas.
Fiddlewood		<i>Cinchona puberula</i> or <i>lanceolata</i>					15'-25'		Equal to spread	Can be trained to be shrub form or can be tree form.
Florida Sweetgum		<i>Lythrum hysserifolium</i>					5'-10'		Equal to spread	
Florida Sweetgum		<i>Lythrum hysserifolium</i>					20'-25'		Equal to spread	
Florida Sweetgum		<i>Lythrum hysserifolium</i>					20'-40'		Equal to spread	
Florida Sweetgum		<i>Lythrum hysserifolium</i>					15'-20'		Equal to spread	
Florida Sweetgum		<i>Lythrum hysserifolium</i>					45'-60'		Equal to spread	
Florida Sweetgum		<i>Lythrum hysserifolium</i>					8'-12'		3'-6' o.c. for shrubby 10'-15' for tree form	Due to potential root damage the use of this tree is advised to be limited to areas that have sufficient open areas. Should not be used immediately adjacent to walkways, medians and/or paved areas. Best for open landscaped/paved green areas.
Florida Sweetgum		<i>Lythrum hysserifolium</i>					10'-20'		Equal to spread	
Florida Sweetgum		<i>Lythrum hysserifolium</i>					10'-20'		Equal to spread	
Florida Sweetgum		<i>Lythrum hysserifolium</i>					60'-100'		Equal to spread	Due to potential root damage the use of this tree is recommended to be used only in limited areas that have sufficient open areas. Should not be used immediately adjacent to walkways, medians and/or paved areas. Best for open landscaped/paved green areas.
Florida Sweetgum		<i>Lythrum hysserifolium</i>					20'-30'		Equal to spread	
Florida Sweetgum		<i>Lythrum hysserifolium</i>					50'-60'		1.5 times spread	Due to potential root damage the use of this tree is recommended to be used only in limited areas that have sufficient open areas. Should not be used immediately adjacent to walkways, medians and/or paved areas. Best for open landscaped/paved green areas.
Florida Sweetgum		<i>Lythrum hysserifolium</i>					50'-60'		1.5 times spread	Due to potential root damage the use of this tree is recommended to be used only in limited areas that have sufficient open areas. Should not be used immediately adjacent to walkways, medians and/or paved areas. Best for open landscaped/paved green areas.
Florida Sweetgum		<i>Lythrum hysserifolium</i>					10'-15'		Equal to spread	
Florida Sweetgum		<i>Lythrum hysserifolium</i>					20'-30'		Equal to height	
Florida Sweetgum		<i>Lythrum hysserifolium</i>					20'-25'		Equal to height	
Florida Sweetgum		<i>Lythrum hysserifolium</i>					15'-20'		Equal to height	
Florida Sweetgum		<i>Lythrum hysserifolium</i>					20'-30'		Equal to spread	Can be trained to be shrub form or can be tree form.
Florida Sweetgum		<i>Lythrum hysserifolium</i>					35'-50'		1.5 times spread	Due to leggy and spread, the use of this species shall be restricted to areas with sufficient areas and nearby adjacent driveway/corridor.
Florida Sweetgum		<i>Lythrum hysserifolium</i>					20'-30'		Equal to spread	Due to size and potential root damage the use of this tree is advised to be limited to areas that have sufficient open areas. Should not be used immediately adjacent to walkways, medians and/or paved areas. Best for open landscaped/paved green areas.
Florida Sweetgum		<i>Lythrum hysserifolium</i>					10'-15'		Equal to spread	Good plant to use in wet areas (e.g. retention areas).
Florida Sweetgum		<i>Lythrum hysserifolium</i>					10'-20'		Equal to spread	Not to be used in medians and/or parking lots where canopy clearance for vehicles is necessary. Use in areas where tree size canopy can provide lateral right of ways, wider medians with no sign restrictions can be good location.
Florida Sweetgum		<i>Lythrum hysserifolium</i>					20'-25'		1.5 times spread	
Florida Sweetgum		<i>Lythrum hysserifolium</i>					30'-50'		Equal to height	Due to potential root damage the use of this tree is recommended to be used only in limited areas that have sufficient open areas. Should not be used immediately adjacent to walkways, medians and/or paved areas. Best for open landscaped/paved green areas.
Florida Sweetgum		<i>Lythrum hysserifolium</i>					40'-60'		Equal to height	Due to potential root damage the use of this tree is recommended to be used only in limited areas that have sufficient open areas. Should not be used immediately adjacent to walkways, medians and/or paved areas. Best for open landscaped/paved green areas.
Florida Sweetgum		<i>Lythrum hysserifolium</i>					40'-60'		Equal to height	Due to potential root damage the use of this tree is recommended to be used only in limited areas that have sufficient open areas. Should not be used immediately adjacent to walkways, medians and/or paved areas. Best for open landscaped/paved green areas.

Plant Lists

Cape Coral



PALMS

COMMON NAME	OTHER NAMES	BOTANICAL NAME	Tropical	MEDIAN THEME APPLICATION	MATURE HEIGHT	MATURE SPREAD	RECOMMENDED SPACING	NOTES / COMMENTS
PalM-Houndar		<i>Pythecorhiza elegans</i>		Mix	18'-20'	10'-15'	Equal to spread	Narrower trunk palm. Can be found in multiple trunk clusters.
PalM-Horca	Golden Cane, Yellow Butterfly, Nandayana, Pura Lincrona	<i>Drypis lanceolata</i> ("Wendlandiana")		Shade	25'-35'	10'-20'	Equal to spread	This species will be minor to select locations and will be considered on a case-by-case basis. Approval and/or rejection at the palm will vary.
PalM-Boracila	Borrah, Boraciana, Boracina	<i>Boraciana nobilis</i>			30'-40'	15'-20'	Equal to height	Spreading equal to height. This is a slow palm and needs plenty of room. Very susceptible to diseases and pest infestations.
PalM-Bocuar		<i>Pseudoboronia longuilla</i>			10'-25'	8'-15'	Equal to spread	Very slow growing. Some trees difficult to source; palm grows thin at 2' in height.
PalM-Casary/Marco Dulu		<i>Phoenix carolinensis</i>						
PalM-Cayentana		<i>Cayentana acuminata</i>			20'-25'	10'-15'	Equal to spread	<i>Acrotyla merillii</i> synonym with <i>Veitchia merillii</i> .
PalM-Chirana	North Palm, Adzocila	<i>Veitchia merillii</i>			35'-40'	15'-20'	Equal to height	Not to be placed in medians with high traffic (vehicle access; pedestrian's) crossings.
PalM-Cocosa		<i>Coccothrinax</i>			20'-30'	15'-20'	Equal to height	Watch for signs of <i>Microcosmus</i> infestations.
PalM-Focall		<i>Nypa fruticosa</i>			20'-40'	10'-15'	Equal to height	Narrower trunk palm. Can be found in multiple trunk clusters.
PalM-Fing/Mexacor	Alexander Palm, Alexander Palm, King Alexander Palm, Northern Alexander Palm	<i>Archonophoenix cunninghamiana</i>			20'-30'	10'-15'	Equal to height	Similar appearance to Boraciana. Also a reef culture in some timber areas.
PalM-Labana Blue		<i>Ladania spp.</i>			20'-30'	10'-15'	Equal to height	Can be fast growing palm.
PalM-Lepely		<i>Ravenea rivularis</i>			15'-20'	10'-15'	Equal to height	
PalM-Mongray		<i>Veitchia roosemeyana</i>			25'-35'	15'-20'	Equal to spread	They have or mimic the <i>Veitchia roosemeyana</i> with the vertical trunk with a few trunks together to make the vertical canopy.
PalM-Palmato (Silver)	Saw Palmetto (green/olive)	<i>Serenoa repens</i>			5'-10'	4'-10'	Equal to height	
PalM-Palmato (Scab)	Scrub Palm, Scrub Palmetto	<i>Sabal umbra</i> (Single ex. Nash)			3'-6'	3'-6'	Equal to height	
PalM-Paracila	Emerald Palm	<i>Acrotyla merillii</i>			30'	20'	Equal to spread	
PalM-Plocum		<i>Archonophoenix cunninghamiana</i>			20'-30'	10'-15'	Equal to spread	
PalM-Prado		<i>Boraciana</i>			15'-20'	10'-15'	Equal to height	
PalM-Pyry	Melrose Dale Palm, Pyry Palm	<i>Phoenix rooseboldii</i>			15'-20'	10'-15'	Equal to spread	
PalM-Rodora		<i>Phoenix rooseboldii</i>			25'-50'	15'-20'	Equal to spread	
PalM-Robon		<i>Livistona decurva</i>			30'-50'	15'-20'	Equal to spread	
PalM-Royal	Royal Palm	<i>Roystonea regia</i>			50'-70'	20'-25'	Equal to spread	
PalM-Sabal	Palmetto Palm	<i>Sabal palmetto</i>			30'-40'	10'-20'	Equal to spread	
PalM-Spindle		<i>Hypochaeris maculata</i>			30'-35'	10'-15'	Equal to spread	
PalM-Sylvestra		<i>Phoenix sylvestris</i> (L.) Thunb.			10'-25'	10'-25'	Equal to spread	
PalM-Touch	Florida Touch	<i>Thrinax parviflora</i>			15'-20'	5'-10'	Equal to height	
PalM-Touch (Silver)	Silver Touch, Silver Palm	<i>Coctocithraea argentea</i>			5'-20'	5'-10'	Equal to spread	
PalM-Tongle		<i>Drypis spicata</i>			25'-35'	10'-15'	Equal to spread	
PalM-Viva		<i>Caryota viviana</i>			20'-30'	10'-15'	Equal to spread	

MULCH

COMMON NAME	OTHER NAMES	BOTANICAL NAME	Tropical	MEDIAN THEME APPLICATION	MATURE HEIGHT	MATURE SPREAD	RECOMMENDED SPACING	NOTES / COMMENTS
Mulch-Synops								5" loose depth
Mulch-Papa								3" loose depth
Mulch-Rud								3" loose depth

Mulch (logs are to be used) on all trees, palms, and other plants. Mulch shall be applied to the remainder of the roadway. If mulch already exists in an approved landscape median on the subject roadway, the same mulch shall be used throughout the remainder of the roadway.

SHRUBS...							
COMMON NAME	OTHER NAMES	BOTANICAL NAME	MEDIAN THEME APPLICATION	MATURE HEIGHT	MATURE SPREAD	RECOMMENDED SPACING	NOTES / COMMENTS
Africania	Dwarf Bournea, Dwarf Escal, Fraxea	<i>Scutellaria arborescens</i>	Mix, Shade	10-15'	6-15'	2' o.c. for straight equal to spread for trees form; 3' o.c. for shrubby equal to spread for individual shrub form	
Bahama Citrus		<i>Citrus bahamensis</i>		3-9'	6-10'		
Beach Scaevola		<i>Halimolobos ciliata</i>		2-4'	2-4'	3' o.c.	
Beach Zebra	American Beautyberry	<i>Callicarpa americana</i>		3-8'	4-8'	3' o.c.	
Blue Periwinkle		<i>Shorea palmeri</i> var. <i>palmeri</i>		4-8'	2-5' o.c.		
Bougainvillea	Prince Power, Helen Johnson	<i>Bougainvillea spp.</i>		15-20'	15-40'	2' o.c. for shrubby; Equal to spread for tree form	
Bougainvillea Dwarf		<i>Bougainvillea spp.</i>		15-20"	15-40"	2' o.c. for shrubby; Equal to spread for tree form	
Cape Honeysuckle		<i>Tournefortia argentea</i>		10-12'	25+		Can be used as a shield or wind for screening purposes. Due to growth potential, recommended maintaining 10' taller than the structure, with a 2' overhang. Can be very aggressive and rampant. When used as a hedge, often has a tendency to become very dense. Pruning is required to keep it from becoming too thick. Pruning should be done in late winter or early spring.
Cassia-Encore, Bantaf	Encore, Bantaf	<i>Cassia macrocarpa</i>		1-2'	4-8'	2-5' o.c.	Encore Bantaf is the dwarf cultivar and is low spreading
Cassia-Sunspot	Bantaf	<i>Cassia macrocarpa</i>		1-2'	4-8'	2-5' o.c.	The cultivar is compact, prostrate shrub, makes a nice foundation plant. Has spreading habit and can be used as a ground cover or as a wall.
Cassia-Dwarf, Haldi Plum	Dwarf Haldi Plum	<i>Cassia macrocarpa</i>		1-2'	4-8'	2-5' o.c.	Haldi Plum is the largest of the trees, and has a more of an open foliage pattern to it. This cultivar is best mainly as an accent or foundation plant.
Chala	Phil's Apple	<i>Chamaecrista nana</i> & <i>Chamaecrista</i>		10-20"	15-20"	2' o.c. for shrubby; Equal to spread for tree form	
Coconut	Isaco	<i>Chrysanthemum coccineum</i>		3-15'	3-15'	2' o.c. for shrubby; Equal to spread for tree form	
Coconut	Isaco	<i>Chrysanthemum coccineum</i>		3-15'	3-15'	2' o.c. for shrubby; Equal to spread for tree form	
Coconut	Phil's Arrowood	<i>Zamia floribunda</i>		2-4'	3-5'	2-5' o.c.	
Croton		<i>Croton variegatum</i>		3-8'	3-8'	5' o.c.	No recent Cultivar Available
Daphnia		<i>Daphnia spp.</i>		1-8"	2-20"	Equal to spread	No recent Cultivar Available
Ficus-White Green-Dwarf		<i>Ficus variegata</i>		2-2'	4-8'	2-5' o.c.	
Ficus-White Green-Fill		<i>Ficus variegata</i>		3-8'	4-8'	2-5' o.c.	
Flax Lily		<i>Diastylis tenuicaulis</i>		1-4'	2-4'	Equal to spread	Can be trained to be shrub form or can be tree form.
Fiddlewood		<i>Citrus aurantium</i>		10-20"	10-15'	2-5' o.c.	
Fire Bush	Solaris B&A, Henry Night Bush	<i>Hamelia patens</i> Jacq.		6-12'	5-8'	Equal to spread	
Fire Bush	Native	<i>Hamelia patens</i>					
Fire Bush-Dwarf		<i>Hamelia patens</i> var. <i>glabra</i> or <i>compacta</i>					
Fuchsia Dwarf		<i>Fuchsia aggregata</i>		10-15'	5-10'	Equal to spread	
Fuchsia Dwarf		<i>Fuchsia aggregata</i>		1-2'	2-4'	Equal to spread	
Fuchsia Dwarf		<i>Fuchsia aggregata</i>		10-15'	10-20"	2' o.c. for hedge; equal to spread for individual shrub form	
Fuchsia Dwarf		<i>Fuchsia aggregata</i>		10-15'	10-20"	2' o.c. for hedge; equal to spread for individual shrub form	
Golden Denderop		<i>Duranta repens</i>		2-4'	2-4'	2-5' o.c.	Can be spread over a fence. Used frequently in median locations in replace of other flowers, low price problems
Golden Denderop		<i>Duranta erecta</i>					
Green Island Ficus		<i>Ficus microcarpa</i>		20-30'	10-15'	Equal to spread	
Holly-Hibiscus		<i>Hibiscus</i>		4-7'	7-10'	2' o.c.	
Holly-Hibiscus	Dwarf Holly, Dwarf Shalika	<i>Hibiscus</i>		10-15'	6-10'	Equal to spread	Can be trained as an upright tree or as a hedge. The dwarf form has a more compact habit and is more suitable for use in a hedge or as a screen to block a window view.
Jamaican Cayote		<i>Cayote sphenantholobus</i>					
Jamaican Dwarf		<i>Jasminum mollissimum</i>		5-15'	5-10'	Equal to spread	
Jamaican Wax		<i>Jasminum sphenantholobus</i> (aka)		5-15'	5-10'	Equal to spread	
Jamaican Star		<i>Jasminum sphenantholobus</i>		5-15'	5-10'	Equal to spread	
Jamaica	Prunella, Spicy-Julya	<i>Jacquinia purpurea</i>		10-15'	10-15'	Equal to spread	
Ligustrum	Ligustrum Dwarf	<i>Ligustrum japonicum</i>		10-15'	10-20"	Equal to spread	

SHRUBS...								
COMMON NAME	OTHER NAMES	BOTANICAL NAME	TROPICAL	MEDIAN THEME APPLICATION	MATURE HEIGHT	MATURE SPREAD	RECOMMENDED SPACING	NOTES / COMMENTS
Midway Grass	Poplar Mat, Hawaiian Milk	<i>Melinis repens</i>	Tropical	Mix	3'-5'	3'-5'	Equal to spread	
Needle Pod		<i>Schinus molle</i>		Shade	5'-10'	10'-16'	8' o.c. for hedge/cover equal to spread for individual shrub form	
Silver Palmetto (aka)	Saw Palmetto (gumbo limbo)	<i>Serrisola rostrata</i>			5'-10'	4'-9'	Equal to height	
Shrub Lemon		<i>Phoradendron flavescens</i>						
Shrub Sage	Lemonwood, Skyflower	<i>Phoradendron flavescens</i>			20'-30'	20'-30'	Equal to spread	
Shrub Pine	N/A	<i>Commersonia bartramia</i>						
Shrub Rose		<i>Justicia brandegeana</i>						
Shrub Sage		<i>Myrsine floribunda</i>						
Shrub Sage		<i>Myrsine floribunda</i>			10'-18'	5'-15'	Equal to spread	Availability may be limited and hard to acquire.
White Shrub		<i>Eugenia jambolana</i>						
GROUND COVER								
COMMON NAME	OTHER NAMES	BOTANICAL NAME	TROPICAL	MEDIAN THEME APPLICATION	MATURE HEIGHT	MATURE SPREAD	RECOMMENDED SPACING	NOTES / COMMENTS
Beard Flower		<i>Heliconia scabra</i>	Tropical	Mix	2'-4'	2'-4'	2' o.c.	Use of this species requires it be linked in a row outside of 18" from median ends.
Blanket Flower		<i>Galavira pulchella</i>		Shade	1'-2'	2'-3'	1'-2' o.c.	Annual/seasonal flower.
Blue Sage		<i>Evolvulus glomeratus</i>			3'-1'	1'-2'	2' o.c.	Allow to spread in fill in. Can be susceptible to mildew. Not recommended to be used when soils are not well drained.
Coral Tones, Coral Plant		<i>Euphorbia milii</i>			1'-3'	2'-3'	Equal to spread	
Golden Creeper		<i>Emmenanthe thalictroides</i>			1'-2'	1'-2'	Equal to spread	
Orange	Bevine Grass, L. Myrtle	<i>Limpodisma laurifolium</i> (Clematis, L.F., Baby)			3'-4'	2'-4'	2'-5' o.c.	Show growing and can be used in median ends. In susceptible to spider mites.
Orange	Dollar Tree	<i>Guettarda speciosa</i>			3'-1'	1'-2'	2' o.c.	
Perennial Peanut		<i>Arachis glabra</i>						Can be aggressive in growth. Use may be limited to better median areas.
Red Leaf		<i>Turpelia rubra</i> (Turpelia L. - at least 20' or less of this species)			N/A	N/A	N/A	
Spotted Garlic		<i>Phaenocarpa</i>			N/A	N/A	N/A	
Sod Shrub		<i>Bahiá</i>			N/A	N/A	N/A	
Sod Sage		<i>Sida acuta</i>			N/A	N/A	N/A	
BEDDING PLANTS								
COMMON NAME	OTHER NAMES	BOTANICAL NAME	TROPICAL	MEDIAN THEME APPLICATION	SUN EXPOSURE	PLANTING PERIOD (ADD-REMOVE)	RECOMMENDED SPACING	NOTES / COMMENTS
Agapanthus	Blue Heron	<i>Agapanthus nodosus</i>	Tropical	Mix	Full Sun	February-July	10"-12" o.c.	
Calceolary	Codebook	<i>Calceolaria</i>			Full Sun	February-July	10"-12" o.c.	
Calceolary		<i>Calceolaria</i>			Partial to Full Shade	Year Round	10"-12" o.c.	
Canna		<i>Canna lily</i>			Full Sun	Year Round	12"-18" o.c.	Remove and Replace every 3 months or as they decline
Crabapple		<i>Malus sp.</i>			Full Sun	Year Round	8'	Take care not to over-prune
Crabapple		<i>Malus sp.</i>			Full Sun	October-May	12"-18" o.c.	Take care not to over-prune
Crabapple		<i>Malus sp.</i>			Partial to Full Shade	October-May	12"-18" o.c.	
Crabapple		<i>Malus sp.</i>			Partial to Full Shade	Spring-Summer	12"-18" o.c.	Great for Summer
Crabapple		<i>Malus sp.</i>			Full Sun	Spring-Summer	10"-12" o.c.	Great for Summer
Crabapple		<i>Malus sp.</i>			Full Sun	February-December	12"-18" o.c.	Does well in shade
Crabapple		<i>Malus sp.</i>			Partial to Full Shade	Spring-Summer	12"-18" o.c.	Use with caution for cooler climates. Always keep soil moist.
Crabapple		<i>Malus sp.</i>			Partial to Full Shade	Spring-Summer	12"-18" o.c.	Use with caution for cooler climates. Always keep soil moist.
Crabapple		<i>Malus sp.</i>			Partial to Full Shade	Spring-Summer	12"-18" o.c.	Use with caution for cooler climates. Always keep soil moist.

Trees							
Common Name	Other Names	Botanical Name	Median Theme Application (S=Shade/T=Tropical/X=Keriscape)	Mature Height	Mature Spread	Recommended Spacing	Notes/Comments
Black Olive Tree	Shady Lady, Greenwood, Orlom	<i>Buddleia lindera</i>	S	40'-50'	35'-50'	Equal to spread	Due to potential root damage the use of this tree is recommended to be used only in limited areas that have sufficient open areas. Best for open lateral/parallel green areas.
Bottle Brush	Bucida, Bucida variegata	<i>Callistemon citrinus or variegata</i>	S	10'-15'	10'-15'	Equal to spread	
Bottlewood	Green Bottlewood	<i>Opuntia stricta</i>	S	30'-40'	20'-30'	Equal to spread tree form	Equal to spread tree form
Bottlewood	Shiny Bottlewood	<i>Coccinifera stricta, var. stricta</i>	S	30'-45'	20'-30'	S.o.c. (for shrubby) Equal to spread for tree form	
Cape Myrtle	Marshallia	<i>Laguncularia indica</i>	S	10'-30'	15'-25'	Equal to spread	
Cypress-Bald	Bald Cypress	<i>Taxodium distichum</i>	S	100'-150'	40'-50'+	Equal to spread	
Fiddlewood	Florida Swamp	<i>Chrysomelium binocurum</i>	S	15'-25'	10'-15'	Equal to spread	
Florida Picket	Florida and Southern Picket	<i>Ferdusa seguinii</i>	S, T, X	10'-15'	10'-15'	Equal to spread	
Florida Tree	Florida Tree	<i>Cordia alliodora</i>	S	25'-30'	20'-20'	Equal to spread	
Gumbo Limbo	Swamp Gum	<i>Bursera simaruba</i>	S, T, X	25'-50'	25'-50'	Equal to spread	
Holly-Hemp	Sourash Holly	<i>Schinus molle</i>	S, X	15'-25'	15'-20'	Equal to spread	
Holly-Hemp	Yucca	<i>Yucca vandenboschi</i>	S, X	15'-25'	15'-20'	Equal to spread	
Jacaranda Tree		<i>Jacaranda mimosoides</i>	S	25'-40'	45'-60'	Equal to spread	
Jamaican Caper		<i>Chippelia gynostemphora</i>	S	6'-15'	8'-17'	3'-5' o.c. (for shrubby) 10'-15' o.c. spread for tree form	
Jamaican Shabbery		<i>Miconia grandifolia</i>	S	30'-35'	30'-35'	Equal to spread	
Maize	Southern Maize, Little Gem	<i>Magnolia grandifolia</i>	S	30'-35'	15'-20'	Equal to spread	
Oak-Like		<i>Quercus umbrata</i>	S, X	40'-60'	60'-100'	Equal to spread	
Pigeon Plum		<i>Coccoloba diversifolia</i>	S, X	15'-25'	20'-30'	Equal to spread	
Poinciana Royal	Poinciana Tree	<i>Bauhinia royal</i> (Syn: ex Hook, Barb)	S	30'-40'	50'-60'	1.5 times spread	
Poinciana Yellow	Yellow Flame Tree, Corpse-Pyd	<i>Bauhinia speciosa</i>	S	30'-40'	50'-60'	1.5 times spread	
Poinciana Dwarf	Peachcock Flower, Barbados Pride	<i>Cassipouira guianensis</i> (L.) Sw.	S	10'-15'	10'-15'	Equal to spread	
Red Maple		<i>Acer rubrum</i> L.	S	60'-75'	25'-30'	Equal to height	
Sourwood		<i>Chrysolepis thalictroides</i>	S, X	30'-45'	20'-20'	Equal to height	
Sea Grape		<i>Coccoloba uvifera</i>	S, T, X	20'-30'	20'-30'	Equal to spread	
Slash Pine	Cuban Pine, Dade County Pine, Dade County Slush Pine, Pich Pine, Slush Pine, South Florida Slush Pine, Swamp Pine	<i>Pinus elliotii</i>	S, X	75'-100'	35'-50'	1.5 times spread	Due to height and spread the use of this species shall be restricted to areas with sufficient areas and nearby adjacent overhead utilities.
Southern Redbaiter	Pich Apple, Pona Apple	<i>Juniperus sibirica</i>	S, X	30'-45'	20'-30'	Equal to height	Due to size and potential root damage the use of this tree is should be limited to areas that have sufficient open areas. Should not be used immediately adjacent to walkways, medians and/or paved areas. Best for open lateral/parallel green areas.
Swamp Maple		<i>Amorpha fruticosa</i>	S	10'-20'	10'-15'	Equal to spread	Good plant to use in wet areas (e.g. detention areas)
Swamp Maple		<i>Amorpha fruticosa</i>	S, X	15'-25'	15'-25'	Equal to spread	Not to be used in medians and/or parking lots where canopy clearances for vehicles is necessary. Use in areas where tree and canopy can spread. Lateral root growth may be an issue. With medians with no sight restrictions can be ideal locations.
Wild Tamarind		<i>Lysitermus bahamensis</i>	X	40'-60'	30'-50'	Equal to height	Due to potential root damage the use of this tree is recommended to be used only in limited areas that have sufficient open areas. Should not be used immediately adjacent to walkways, medians and/or paved areas. Best for open lateral/parallel green areas.
Wild Tamarind		<i>Lysitermus bahamensis</i>	X	40'-60'	30'-50'	Equal to height	Due to potential root damage the use of this tree is recommended to be used only in limited areas that have sufficient open areas. Should not be used immediately adjacent to walkways, medians and/or paved areas. Best for open lateral/parallel green areas.

Palms						
Common Name	Other Names	Botanical Name	Median Theme Application (S=Shade/T=Tropical/X=Xeriscape)	Mature Height	Recommended Spacing	Notes/Comments
Palm-Alexandri	Soldier Palm, Yellow Butterfly, Madagascan, Arecia latifrons	<i>Phoenix niroyana</i> (L. Wendl.) Beccari & Dring	T	15'-20'	Equal to spread	Narrow-leaf trunk palm. Can be found in multiple trunk clusters.
Palm-Akeca			T	25'-35'	Equal to spread	
Palm-Bismarckia	Bismark, Bismarckia Bismarckia	<i>Bismarckia nobilis</i>	T	10'-20'	Equal to spread	Spacing equal to height. This is a showy palm and needs plenty of room. Very susceptible to diseases and pest infestations.
Palm-Burcaeser		<i>Phaceliphoenix serpens</i>	T,X	10'-25'	Equal to spread	Very slow growing. Sometimes difficult to source palms greater than 5' o.a. height.
Palm-Casino Island Date		<i>Phoenix carolinensis</i>	T	20'-25'	Equal to spread	
Palm-Carpentaria		<i>Carpentaria acuminata</i>	T	35'-40'	Equal to height	
Palm-Christmas	Manila Palm, Adonia	<i>Veitchia merrilli</i>	T	10'-15'	Equal to spread	<i>Adonia merrilli</i> is synonymous with <i>Veitchia merrilli</i>
Palm-Coconut		<i>Cocos nucifera</i>	T	15'-20'	Equal to height	Match for signs of Microclimate deficiencies
Palm-Foxtail		<i>Wodyetia bifurcata</i>	T	20'-30'	Equal to height	
Palm-European Fan			T	20'-40'	Equal to height	
Palm-King Alexander	Alexander Palm, Alexander Palm, King Palm	<i>Archaochlophoenix cunninghamiana</i>	T	20'-30'	Equal to height	Narrow-leaf trunk palm. Can be found in multiple trunk clusters.
Palm-Lahaina Blue	Alexander Palm, Newborn Begonia Palm	<i>Latisia sup.</i>	T,X	15'-20'	Equal to height	Similar appearance to Bismarckia. Also a red cultivar in some limited areas.
Palm-Majesty	Majestic Palm	<i>Ravenea rivularis</i>	T	10'-15'	Equal to height	Can be best growing palm. Trunks may grow with the viticula medians and unspread them together to make the viticula section
Palm-Montgomery		<i>Veitchia montgomeryana</i>	T	25'-35'	Equal to spread	
Palm-Palmato (Silver)	Saw Palmato (green/olive)	<i>Serenoa repens</i>	T,X	5'-10'	Equal to height	
Palm-Palmato (Scrub)	Scrub Palm, Scrub Palmletto	<i>Sabal olerif Swingle ex Nash</i>	T,X	3'-5'	Equal to height	
Palm-Piccadilly	Piccadilly Palm	<i>Chorizanthe linearis</i>	T,X	5'-8'	Equal to height	
Palm-Piccadilly	Piccadilly Palm	<i>Archaochlophoenix cunninghamiana</i>	T	20'-30'	Equal to spread	
Palm-Pindo		<i>Borja capitata</i>	T	15'-20'	Equal to height	
Palm-Pygmy	Pygmy Palm, Pygmy Date Palm	<i>Phoenix roebelenii</i>	T,X	15'-20'	Equal to spread	
Palm-Royal	Royal Palm	<i>Roystonea regia</i>	T	30'-40'	Equal to spread	
Palm-Royal	Frida, Royal Palm	<i>Roystonea regia</i>	T	30'-40'	Equal to spread	
Palm-Sabal	Cabbage Palm, Palmletto	<i>Sabal palmetto</i>	T,X	20'-40'	Equal to spread	
Palm-Spirallo		<i>Hypophorrea wrightii</i>	T	10'-15'	Equal to spread	
Palm-Sweeter		<i>Thrinax parviflora</i>	T	20'-25'	Equal to spread	
Palm-Tanaka	Frida, Tanaka	<i>Thrinax parviflora</i>	T,X	15'-20'	Equal to spread	
Palm-Tanaka (Silver)	Silver Tanaka, Silver Palm	<i>Coccothrinax argentea</i>	T,X	5'-20'	Equal to spread	
Palm-Triangle		<i>Dypsis decaryi</i>	T,X	25'-35'	Equal to spread	
Palm-Wax		<i>Copernicia pruriens</i>	T	25'-30'	Equal to spread	

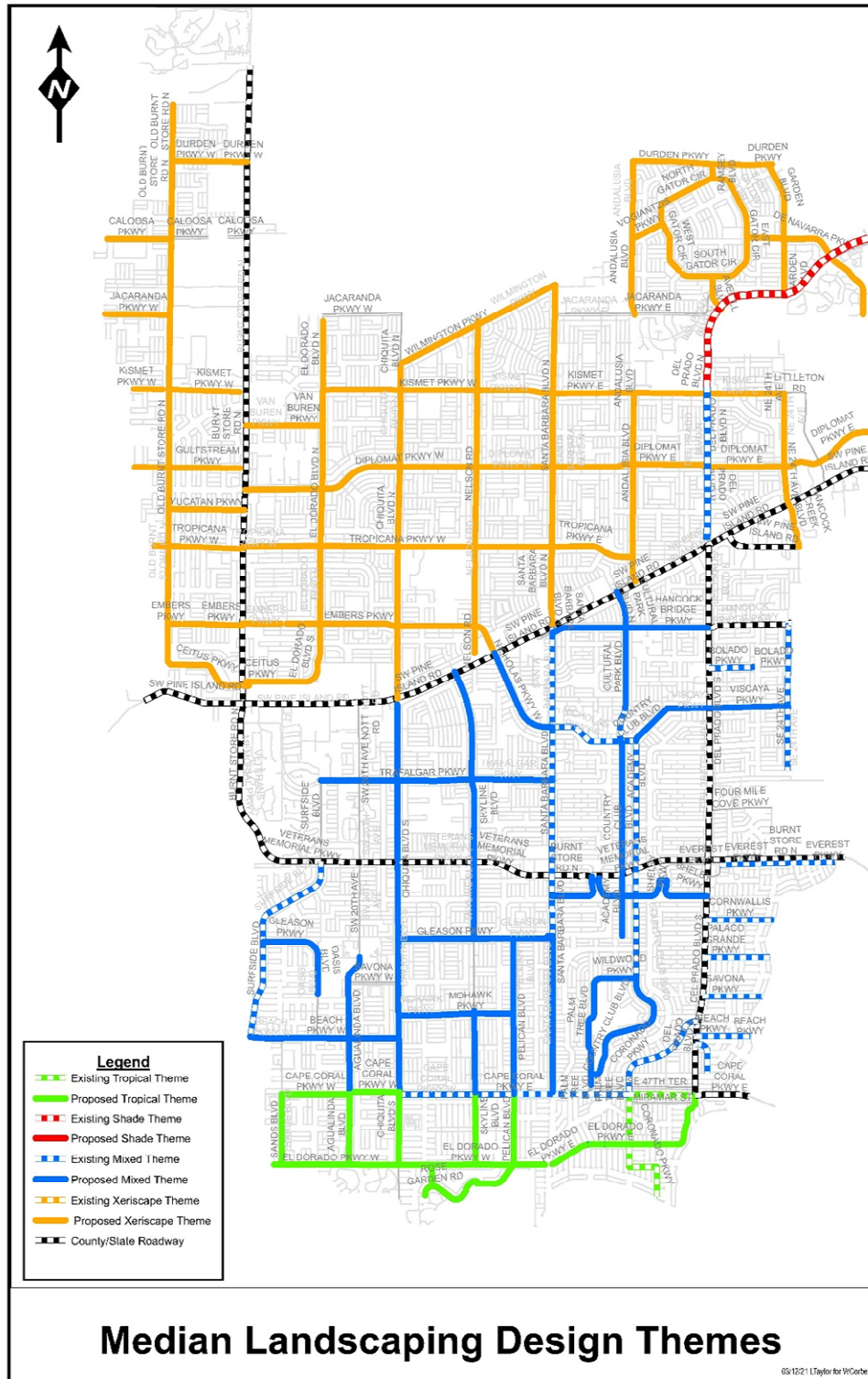
Shrubs							
Common Name	Other Names	Botanical Name	Median Theme Application (S=Shade/T=Tropical/X=Xeriscape)	Mature Height	Mature Spread	Recommended Spacing	Notes/Comments
Azobolus	White Iron Dwarf Scheff.	<i>Schaffnera alicicola</i>	S, T	10'-15'	6'-15'	For shrubs: Equal to spread for tree form 5' o.c. for hedge/space equal to spread for individual shrub form	
Bahama Cassia		<i>Cassia bahamensis</i>	T, X	3'-9'	6'-10'	5' o.c.	
Beard's Skullflower		<i>Asplenium skullerianum</i>	S, T, X	3'-4'	4'-8'	5' o.c.	
Blue Bonnetweed	American Blanketflower	<i>Chilopsis linearis</i>	S, T	4'-8'	4'-8'	3'-5' o.c.	
Bougainvillea	Paper Flower, Helen Johnson	<i>Strobilanthus hamboensis</i>	S, T, X	1'-20"+	15'-40'	5' o.c. (for shrubs)/Equal to spread for tree form	
Bougainvillea Dwarf		<i>Bougainvillea spp</i>	S, T, X	1'-20"+	15'-40'	5' o.c. (for shrubs)/Equal to spread for tree form	
Cape Honeysuckle		<i>Tecomaria capensis</i>	S, T	10'-12'	25'-1'	3' o.c. (for shrub)	
Casbah Emerald Blanket	Emerald Blanket	<i>Carissa macrocarpa</i>	S, T	1'-2'	4'-8'	3'-5' o.c.	Can be used as a shrub or vine for screening purposes. Due to growth potential, recommend maintaining 10' buffer from trees/palisades, wells, and/or structures. Growth can be very aggressive and rampant. When used as a shrub, often has responses when allowed to naturally form shape in lieu of heavy pruning/shaping. This cultivar is a compact, rounded shrub, and is low spreading.
Casbah Boxwood	Boxwood	<i>Carissa macrocarpa</i>	S, T	1'-2'	4'-8'	3'-5' o.c.	This cultivar is a compact, rounded shrub, makes a nice foundation plant. Has spreading habit and can be used as a ground cover shrub as well.
Casbah Dwarf Nival Plum	Dwarf Nival Plum	<i>Carissa macrocarpa</i>	S, T	1'-2'	4'-8'	3'-5' o.c.	Natal Plum is the largest of the three, and has a bit more of an open foliage pattern to it. This cultivar is used mainly as an accent, or foundation plant.
Chalala	Plum Apple	<i>Chala rosea & Chala guffiera</i>	S, T, X	25'-30'	15'-25'	5' o.c. (for shrub)/Equal to spread for tree form	
Coccoloba	Isaco	<i>Chrysothamnus leuco</i>	S, T, X	3'-15'	3'-15'	5' o.c. (for shrub)/Equal to spread for tree form	
Coccoloba	Isaco	<i>Chrysothamnus leuco</i>	S, T, X	3'-15'	3'-15'	5' o.c. (for shrub)/Equal to spread for tree form	
Coccoloba	Florida Arrowwood	<i>Zinnia floridana</i>	S, T, X	3'-4'	3'-5'	3'-5' o.c.	Numerous Cultivars Available
Croton		<i>Croton variegatum</i>	S, T	3'-8'	3'-8'	5' o.c.	Numerous Cultivars Available
Drecaena		<i>Drecaena var</i>	S, T	1'-40"	2'-20"	Equal to spread	
Fakalaka-like Grass Dwarf		<i>Triglochin bogotense</i>	S, T, X	2'-3'	4'-8'	3'-5' o.c.	
Fakalaka-like Grass Full		<i>Triglochin bogotense</i>	S, T, X	3'-4'	4'-8'	3'-5' o.c.	
Fiddlehead		<i>Chromolaena</i>	S, X	15'-25'	10'-15'	3'-5' o.c. spread	
Fire Bush	Scarlet Bush, Hummingbird Bush	<i>Hamelia patens</i>	S, T, X	6'-12'	5'-8'	Equal to spread	Can be trained to be shrub form or can be tree form.
Fire Bush	Native	<i>Hamelia patens</i>	S, T, X	6'-12'	5'-8'	Equal to spread	
Fire Bush Dwarf	Dwarf Firebush	<i>Hamelia patens var glabra or compacta</i>	S, T, X				
Florida Privet	Privet and Southern Privet	<i>Fovadione aggregata</i>	S, T, X	10'-15'	5'-10'	Equal to spread	Can be trained to be shrub form or can be tree form.
Fossil Fern		<i>Agavegata dryinitifolia</i>	S, T	1'-2'	2'-4'	Equal to spread	
Golden Dewdrop		<i>Duranta spicata</i>	S, T, X	10'-15'	10'-20'	5' o.c. for hedge/space equal to spread for individual shrub form	Native
Golden Dewdrop		<i>Duranta erecta</i>	S, T, X	10'-15'	10'-20'	5' o.c. for hedge/space equal to spread for individual shrub form	Not Native
Grass Island Ficus		<i>Ficus chrysocarpa</i>	S, T	2'-4'	2'-4'	3'-5' o.c.	Can be spaced closer if desired. Used frequently in median locations to replace Urban Palmettos, for pest problems experienced.
Holly Dancer	N/A	<i>Ilex cassine</i>	S, X	20'-30'	10'-18'	Equal to spread	
Ilex Schilling	Dwarf Holly, Dwarf Schilling	<i>Ilex vomitoria</i>	S, T	4'-7'	7'-10'	5' o.c.	Can be utilized as an understory tree in medians. Can be trained to be tree form by increasing trunk diameter. It can also be clipped into a hedge or tall screen to block an undesirable view.
Jamaican Checker		<i>Capparis pyramidalifera</i>	S, T, X	10'-15'	6'-12'	Equal to spread	
Jasmine-Daisy		<i>Asplenium mollissimum</i>	S, T	5'-15'	5'-10'	Equal to spread	
Jasmine-Wick		<i>Asplenium xanthum (aka)</i>	S, T	6'-15'	5'-10'	Equal to spread	
Jasmine-Stir		<i>Asplenium rhifolium</i>	S, T	5'-15'	5'-10'	Equal to spread	
Jatropha	Pearsonia, Spicy, Alocuba	<i>Jatropha integrifolia compacta</i>	S, T	10'-15'	10'-15'	Equal to spread	
Jatropha		<i>Jatropha integrifolia</i>	S, T	10'-15'	10'-15'	Equal to spread	
Laburnum	Regal Ash, Barren Mundy	<i>Laburnum anagyroides</i>	S, T, X	3'-5'	3'-5'	Equal to spread	
Medicinal Pod		<i>Stephanotis formosensis var. evanescens</i>	S, T, X	5'-10'	4'-10'	5' o.c. for hedge/space equal to spread for individual shrub form	
Medicinal Pod	Saw Palmetto (green/ilver)	<i>Sabal palmetto</i>	S, T	5'-10'	4'-10'	Equal to height	
Phlox		<i>Phlox paniculata</i>	S, T	5'-10'	4'-10'	Equal to height	
Pumbago	Pumbago, Soyflower	<i>Pumbago aculeata Lam.</i>	S, T, X	25'-30'	20'-30'	Equal to spread	
Sea Grape	N/A	<i>Coccoloba uvifera</i>	S, T, X	25'-30'	20'-30'	Equal to spread	
Shrimp Plant		<i>Jussiaea breviflora</i>	S, T	10'-15'	10'-15'	Equal to spread	
Shrimp Plant		<i>Jussiaea breviflora</i>	S, T	10'-15'	10'-15'	Equal to spread	
White Bonnet	White Bonnet, Supper	<i>Asclepias tuberosa</i>	S, T, X	10'-15'	10'-15'	Equal to spread	Availability may be limited and hard to source due.
White Bonnet		<i>Asclepias tuberosa</i>	S, T, X	10'-15'	10'-15'	Equal to spread	
White Supper		<i>Eugenia antheris</i>	S, T	10'-15'	10'-15'	Equal to spread	

Ground Cover							
Common Name	Other Names	Botanical Name	Median Theme Application (S=Shade T=Tropical X=Xeriscape)	Mature Height	Mature Spread	Recommended Spacing	Notes/Comments
Bunch Shillflower		<i>Hebecladus debilis</i>	S,T,X	2'-4'	2'-4'	3' o.c.	Use of this as groundcover will be limited in areas outside of 100' from median ends.
Blanket Flower		<i>Gallieria pycnocheila</i>	S,X	1'-2'	2'-3'	1'-2' o.c.	Annual/seasonal flower. Can be susceptible to mildew. Not recommended to be used where soils are not well drained.
Blue Escal		<i>Encolada glaberrima</i>	S,T	0.5'-1'	1'-2'	3' o.c.	
Crown of Thorns	Chrisi Thorns, Chrisi Plant	<i>Euphorbia milii</i>	S,T	1'-3'	2'-3'	Equal to spread	
Golden Creeper		<i>Emoclea littoralis</i>	S,T	1'-2'	1'-2'	Equal to spread	
Limon	Sander Grass, Lily, Turf	<i>Musa musca (Dwarf)</i> , <i>H. Boley</i>	S,T,X	3'-4'	3'-4'	3'-5' o.c.	Slow growing and can be used in median ends. Is susceptible to spider mites.
Princeton Juniper	Dubuisan Juniper	<i>Juniperus horizontalis 'Penzance'</i>	S,X	5'-11'	1'-2'	3' o.c.	Can be aggressive in growth. Use may be interdicted/restricted to select medians/ends.
Rainfall Vireo		<i>Ipomoea pedicellaris</i>	S,T				
Society Garlic	Pink Agapanthus	<i>Tulbaghia violacea (Tulbaghia L. - at least 20 varieties of this species)</i>	S,T	N/A	N/A	N/A	
Stardust		<i>Rosa spp.</i>	S,T,X	N/A	N/A	N/A	
Star Sp. Aspidistra			S,T	N/A	N/A	N/A	

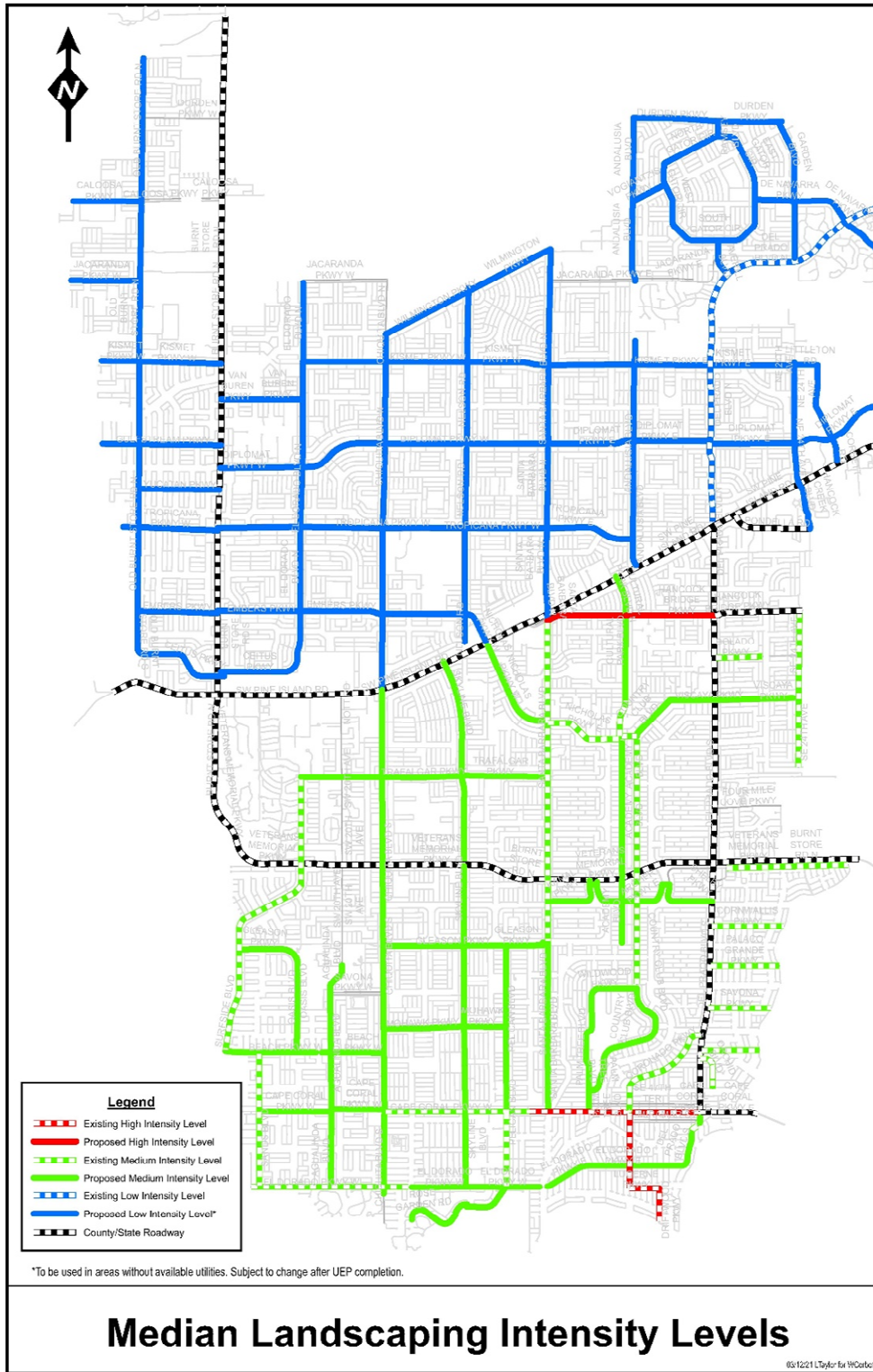
Bedding Plants							
Common Name	Other Names	Botanical Name	Median Theme Application (S=Shade T=Tropical X=Xeriscape)	Sun Exposure	Planting Period (Add/Remove)	Recommended Spacing	Notes/Comments
Azalea		<i>Indocalamus japonicus</i>	S	Full Sun	February-July	16'-18' o.c.	
Camellia	Coldascento	<i>Camellia japonica</i>	S	Full Sun	Year Round	16'-24' o.c.	Remove and replace every 3 months or as they decline
Camellia		<i>Camellia xhypanthica</i>	S	Full Sun	Year Round	12'-18' o.c.	Terminates Cold and Salt Spray
Cornus		<i>Cornus japonica</i>	S	Partial to Full Shade	October-May	12'-18' o.c.	Great for Summer
Geum		<i>Geum japonicum</i>	S	Full Sun	Spring-Summer	12'-18' o.c.	Does well in heat
Hydrangea		<i>Hydrangea macrocarpa</i>	S	Partial to Full Shade	Year Round	12'-18' o.c.	Use Viola cultivar for color; winter months. Attracts bees and butterflies.
Hydrangea		<i>Hydrangea serrata</i>	S	Partial to Full Shade	Year Round	12'-18' o.c.	
Junonia		<i>Junonia japonica</i>	S	Full Sun	February-December	12'-18' o.c.	
Junonia		<i>Junonia japonica</i>	S	Full Sun	February-December	12'-18' o.c.	
Loquax		<i>Loquax japonica</i>	S	Full Sun	Year Round	12'-18' o.c.	
Quince		<i>Quince japonica</i>	S	Full Sun	Year Round	12'-18' o.c.	
Sorbus		<i>Sorbus japonica</i>	S	Full Sun	Year Round	12'-18' o.c.	
Zinnia		<i>Zinnia japonica</i>	S	Full Sun	Year Round	12'-18' o.c.	

Mulch						
Common Name	Other Names	Notes/Comments				
		Mulch rings are to be used around all trees, palms, utility boxes, sign posts, electrical services/panels and as indicated by the City's representative. New medians will establish mulch type & mulch color to be utilized the remainder of roadway. If mulch already exists in an approved landscaped median on the subject roadway, the same mulch shall be required throughout the remainder of the roadway.				
Black/Green		1" (5.08 cm) depth				
Brown/Black		3" (7.62 cm) depth				

Median Design "Themes"



Median Design "Intensities"



Recognition Signage



Adopt-a-Median Application

MEDIAN LANDSCAPE and IRRIGATION APPLICATION



JDE ACCT. #	Billing Cycle:		
PERMIT #			
DATE:		ISSUED BY:	

CONTRACTOR INFORMATION			
Contractor Business Name:		License Holder's Name:	
Mailing Address:		City License #:	
City:	State:	Zip:	State License #:
Phone #:	Fax #:	Contact Person:	
Alt. Phone #:		Email:	
Proposed Work:			
APPLICANT INFORMATION (Must be filled out even if using a contractor)			
Applicant:		Applicant's Representative:	
Address:		Address:	
City:	State:	Zip:	City: State: Zip:
Phone #:	Fax:	Phone #:	Fax:
Email:		Email:	
Alt. Contact Person:		Phone #:	Email:
Proposed Work:			
PROJECT INFORMATION			
Landscape area type: Median <input type="checkbox"/> Cul-de-sac Island <input type="checkbox"/> Round-about Island <input type="checkbox"/>			
Area location: Median #		Area in sq.ft.:	Strap #:
Intersecting roadways at either end of area:			
P.W. Planning Manager Approval:			
Comments:			

1. Applicant(s) information must be provided and application signed by applicant. Contractor information and signature must also be provided if a contractor will be performing work.
2. Application must be notarized for applicant and contractor as applicable (can be notarized separately).
3. A Median and/or Cul-de-Sac Landscape Term Sheet, including project cost/evaluation must be provided by the applicant or their contractor. This shall include all costs for materials and improvements proposed by the applicant that will be installed within the median and/or cul-de-sac.
4. A plan that includes (but not limited to) sizes, types, quantities, locations of trees, shrubs, ground cover, irrigation components and mulch. Plan shall also include all existing landscaping or irrigation. Any existing items to be removed shall be identified as such. Identify provisions for irrigation of the proposed landscaping
5. Permit Fees for landscaping and right of way shall apply. **Note:** A separate permit will be required for installation of all irrigation systems, these will require additional fees.
6. A Traffic Control Plan (Maintenance of Traffic) shall be required for all work within the City's right of ways. Traffic Control Plans shall be reviewed on a case by case basis to determine the level of Traffic Control that may be required.

APPLICANT'S AFFIDAVIT:

Application is hereby made to obtain a permit to do landscape installation/maintenance which may include irrigation, as indicated above. I certify that all the foregoing information is true and accurate and that no work or installation has commenced prior to the issuance of a permit. I certify that all work will to be performed will comply with the City of Cape Coral Land Use and Development Regulations, Section 3.14, 3.24, 3.25, 5.2 and 5.3. furthermore all work and/or improvements shall bi in compliance with the City of Cape Coral Public Work's Department's median landscape design themes. densities as well as the PW design templates. By signing this application, if applicable, I agree to use the Irrigation Service from the City of Cape Coral Public Works Utility Division in accordance with the City of Cape Coral Ordinances, Regulations and Recommendations (Ord, 77-97, 11/27/07). I understand that a separate permit must be secured for ELECTRICAL WORK, PLUMBING, SIGNS, WELLS, IRRIGATION, etc.

I hereby acknowledge that I have read and understand the above affidavit(s) on this ____ day of ____ 20____ .

Name (PRINT ONLY)

SIGNATURE OF APPLICANT

State of Florida, County of Lee. Subscribed and sworn to (or affirmed) before me this ____ day of ____, 20____, _____ who is personally known to me or produced _____ as identification.

Date

Signature of Notary Public

Commission Number

Printed Name of Notary Public

CONTRACTOR'S AFFIDAVIT:

I further certify that I have entered into a contract with the applicant to make the specified improvements to, or perform the contracting at, the location specified in this application. I acknowledge and accept responsibility for compliance with the current Florida Building Code, City regulations, and ordinances, City design themes, templates and densities, as well as the payment of all legally constituted fees regarding this application, including but not limited to ALL REVIEW FEES and PERMIT FEES. I understand that a separate permit must be secured for ELECTRICAL WORK, PLUMBING, SIGNS, WELLS, IRRIGATION, etc.

I hereby acknowledge that I have read and understand the above affidavit(s) on this ____ day of ____ 20____ .

Name (PRINT ONLY)

SIGNATURE OF CONTRACTOR

State of Florida, County of Lee. Subscribed and sworn to (or affirmed) before me this ____ day of ____, 20____, _____ who is personally known to me or produced _____ as identification.

Date

Signature of Notary Public

Commission Number

Printed Name of Notary Public

MEDIAN LANDSCAPE AND IRRIGATION APPLICATION

Scope of Improvements to be installed by Applicant/Contractor:

Proposed phasing of Improvements (duration between phases of more than 180 days will be considered a separate project and will require a new permit):

Estimated Value of Improvements: _____

Signature of Applicant: _____
Date

Signature of Contractor (if applicable): _____
Date

FOR OFFICE USE ONLY

Scope of Improvements to be provided by City:

Estimated value of City Contribution (If Applicable): _____

Signature of Reviewer: _____
Date

DRAFT 11/15/19